



www.dcjs.virginia.gov

Drug Cases Submitted to the Virginia Department of Forensic Science

Calendar Year 2019

**A Joint Report by the Virginia Departments of
Forensic Science
&
Criminal Justice Services**



www.dfs.virginia.gov

Drug Cases Submitted to the Virginia Department of Forensic Science

- DFS receives tens of thousands of drug submissions every year.
- This report defines “cases” differently from how DFS uses the term internally. For purposes of this report, if multiple drugs are identified in a single submission, each drug is counted separately as one “case.” For example, a submission that includes both heroin and cocaine will be counted once as a heroin case and once as a cocaine case.
- Data presented here are for select drug categories of interest
 - Cocaine
 - Heroin
 - Methamphetamine
 - Marijuana
 - Cannabimimetic Agents¹
 - “Club Drugs”²
 - Prescription Opioids³
 - Prescription Stimulants
 - Benzodiazepines
 - Illicit Synthetic Opioids⁴

1- Cannabimimetic agents were previously labeled “synthetic cannabinoids.”

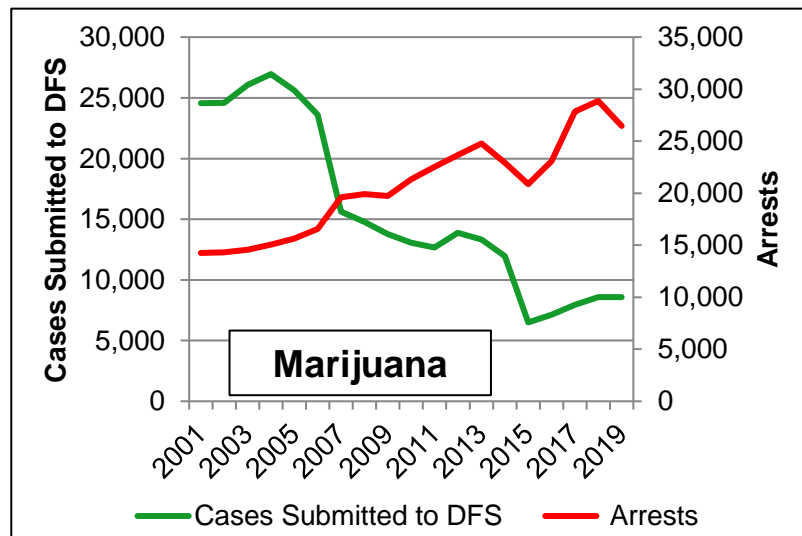
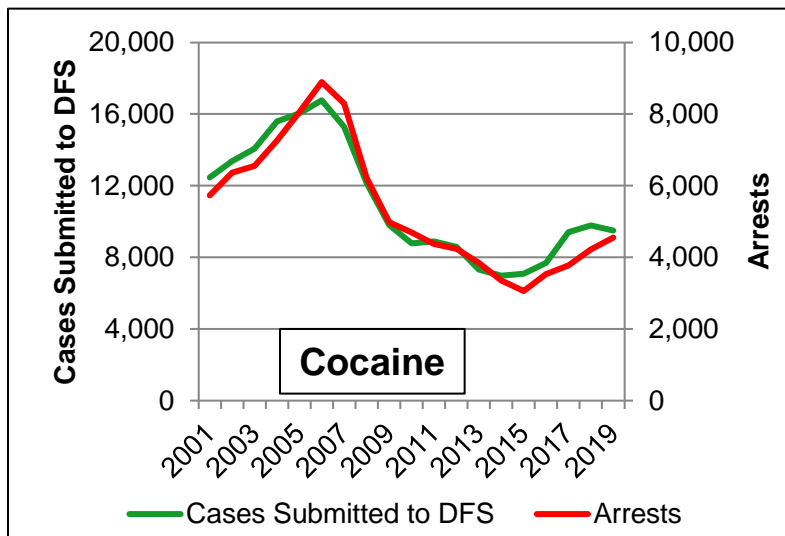
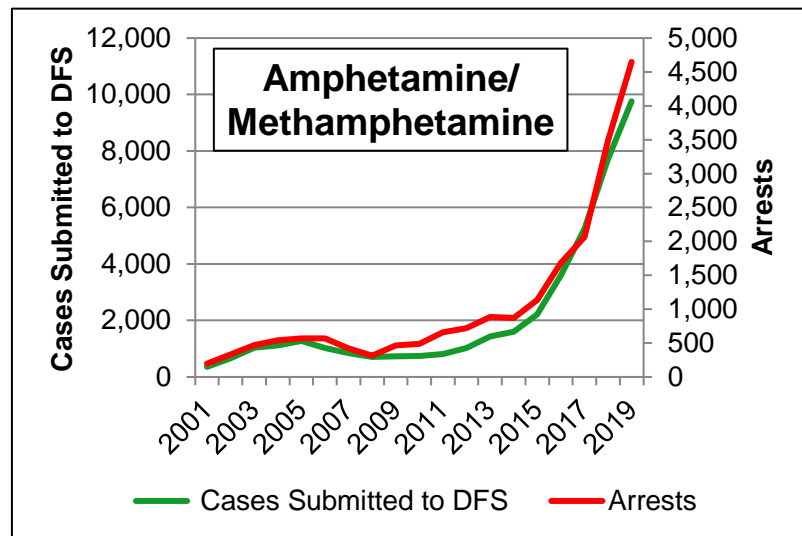
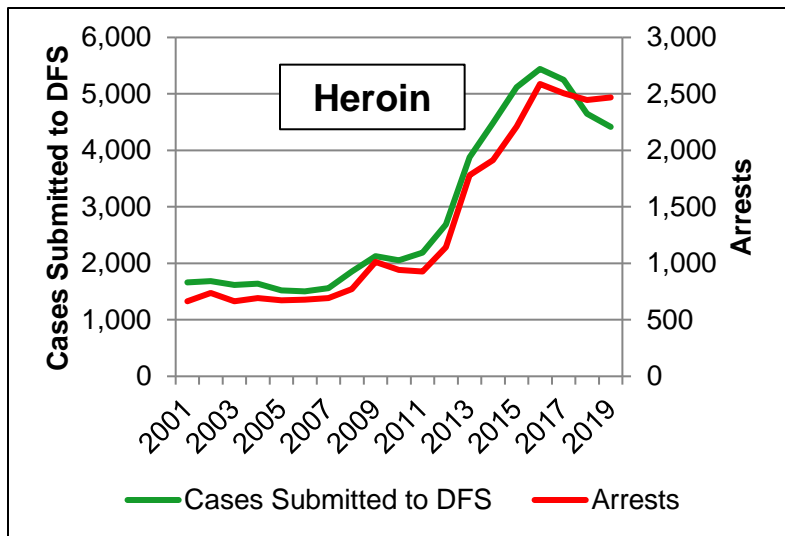
2- Includes various designer and other drugs including MDMA (“Ecstasy”), Ketamine, Phenethylamines, Tryptamines, Piperazines, substituted cathinones (“bath salts”), and others. Use of these drugs is not limited to clubs or parties, and in fact some of these designer drugs might not be identified as “club drugs” *per se*, but in lieu of a better category label, they are included here. Any drug listed specifically above is not included in this category.

3- Fentanyl submissions identified as being in the form of a transdermal patch are counted with other prescription opioids. All other forms of fentanyl and fentanyl derivatives are counted as “illicit” for purposes of this report.

4- Includes fentanyl cases in which the drug is not in the form of a transdermal patch, all fentanyl derivatives, U-47700, and other illicitly-produced synthetic opioids.

Comparing DFS Cases to Arrest Data

Select drug types, calendar years 2001-2019

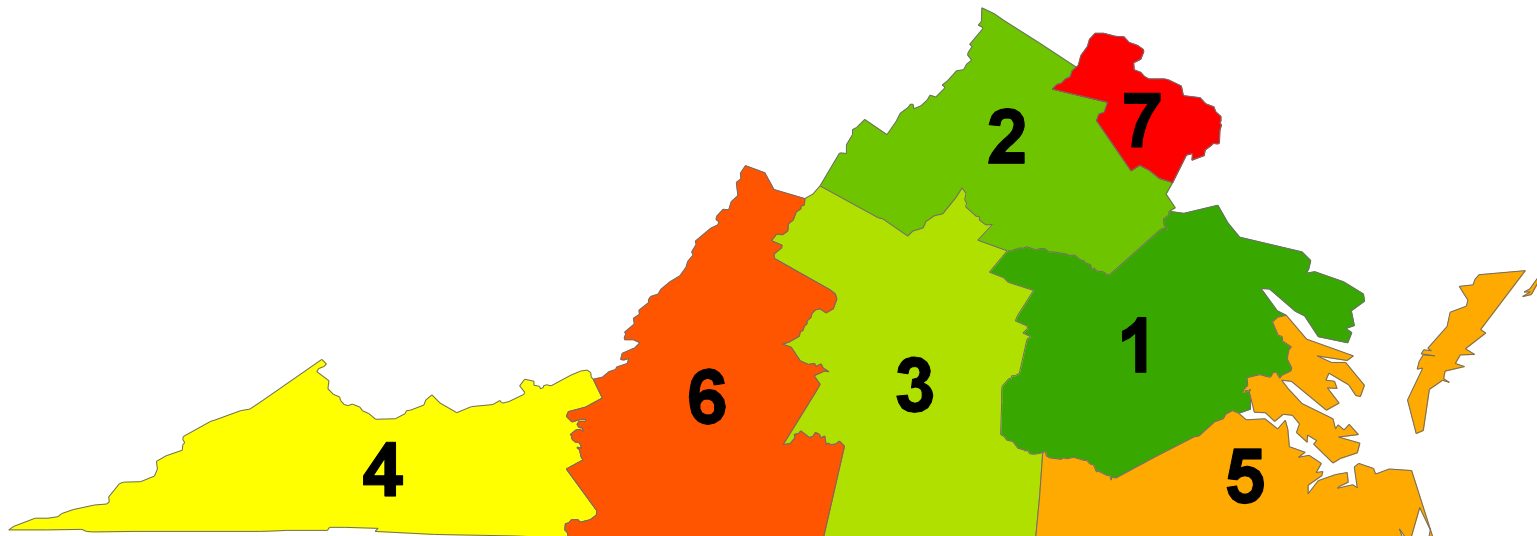


Comparing DFS Cases to Arrest Data

Select drug types, calendar years 2001-2019

- For cocaine, heroin, and amphetamine/methamphetamine, DFS cases and VSP arrest data show a similar pattern.
 - The number of DFS cases (the left axis and the green line in each chart) is consistently about double the number of arrests (right axis, red line). Note that a single arrest could involve multiple drugs, but the arresting officer might not be able to specifically identify each drug type. An individual might be arrested for possessing cocaine, and DFS might later determine that heroin was also present.
- DFS cases and VSP arrest data for marijuana do *not* share a similar pattern. There is a clear break in the series of data for both DFS cases (left axis, green line) and arrests (right axis, red line).
 - Changes in the *Code of Virginia* relating to law enforcement testimony with regard to marijuana field test kits (beginning July 2006) coincided with an increase in marijuana arrests and a decrease in marijuana cases submitted to DFS.
 - Marijuana case data before and after this change cannot be compared. Because of this, marijuana cases are given less focus in this report.

Virginia State Police Divisions



<u>Division 1</u>		<u>Division 2</u>		<u>Division 3</u>		<u>Division 4</u>		<u>Division 5</u>		<u>Division 6</u>		<u>Division 7</u>	
Amelia County	Lancaster County	Clarke County	Albemarle County	Bland County	Accomack County	York County	Alleghany County	Roanoke County	Arlington County				
Caroline County	Louisa County	Culpeper County	Amherst County	Buchanan County	Brunswick County	Chesapeake City	Bath County	Rockbridge County	Fairfax County				
Charles City County	New Kent County	Fauquier County	Appomattox County	Carroll County	Gloucester County	Emporia City	Bedford County	Bedford City	Loudoun County				
Chesterfield County	Northumberland County	Frederick County	Augusta County	Dickenson County	Greensville County	Franklin City	Botetourt County	Buena Vista City	Prince William County				
Dinwiddie County	Nottoway County	Madison County	Buckingham County	Giles County	Isle of Wight County	Hampton City	Craig County	Danville City	Alexandria City				
Essex County	Powhatan County	Orange County	Campbell County	Grayson County	James City County	Newport News City	Floyd County	Lexington City	Fairfax City				
Goochland County	Prince George County	Page County	Charlotte County	Lee County	Mathews County	Norfolk City	Franklin County	Martinsville City	Falls Church City				
Hanover County	Richmond County	Rappahannock County	Cumberland County	Pulaski County	Middlesex County	Poquoson City	Henry County	Radford City	Manassas City				
Henrico County	Westmoreland County	Rockingham County	Fluvanna County	Russell County	Northampton County	Portsmouth City	Highland County	Roanoke City	Manassas Park City				
King and Queen County	Colonial Heights City	Shenandoah County	Greene County	Scott County	Southampton County	Suffolk City	Montgomery County	Salem City					
King George County	Hopewell City	Spotsylvania County	Halifax County	Smyth County	Surry County	Virginia Beach City	Patrick County						
King William County	Petersburg City	Stafford County	Lunenburg County	Tazewell County	Sussex County	Williamsburg City	Pittsylvania County						
	Richmond City	Warren County	Mecklenburg County	Washington County									
		Fredericksburg City	Nelson County	Wise County									
		Harrisonburg City	Prince Edward County	Wythe County									
		Winchester City	Charlottesville City	Bristol City									
			Lynchburg City	Galax City									
			Staunton City	Norton City									
			Waynesboro City										



www.dcs.virginia.gov

Virginia State Court Districts



Court District	Locality
1st	Chesapeake City
2A	Accomack County Northampton County
2nd	Virginia Beach City
3rd	Portsmouth City
4th	Norfolk City
5th	Franklin City Isle of Wight County Southampton County Suffolk City
6th	Brunswick County Emporia City Greensville County Hopewell City Prince George County Surry County Sussex County
7th	Newport News City
8th	Hampton City
9th	Charles City County Gloucester County James City County King and Queen County King William County Mathews County Middlesex County New Kent County Poquoson City Williamsburg City York County

Court District	Locality
10th	Appomattox County Buckingham County Charlotte County Cumberland County Halifax County Lunenburg County Mecklenburg County Prince Edward County
11th	Amelia County Dinwiddie County Nottoway County Petersburg City Powhatan County
12th	Chesterfield County Colonial Heights City
13th	Richmond City
14th	Henrico County
15th	Caroline County Essex County Fredericksburg City Hanover County King George County Lancaster County Northumberland County Richmond County Spotsylvania County Stafford County Westmoreland County

Court District	Locality
16th	Albemarle County Charlottesville City Culpeper County Fluvanna County Goochland County Greene County Louisa County Madison County Orange County
17th	Arlington County Falls Church City
18th	Alexandria City
19th	Fairfax City Fairfax County
20th	Fauquier County Loudoun County Rappahannock County
21st	Henry County Martinsville City Patrick County
22nd	Danville City Franklin County Pittsylvania County
23rd	Roanoke City Roanoke County Salem City

Court District	Locality
24th	Amherst County Bedford City Bedford County Campbell County Lynchburg City Nelson County
25th	Alleghany County Augusta County Bath County Botetourt County Buena Vista City Clifton Forge Covington City Craig County Highland County Loudoun County Rockbridge County Staunton City Waynesboro City
26th	Clarke County Frederick County Harrisonburg City Page County Rockingham County Shenandoah County Warren County Winchester City

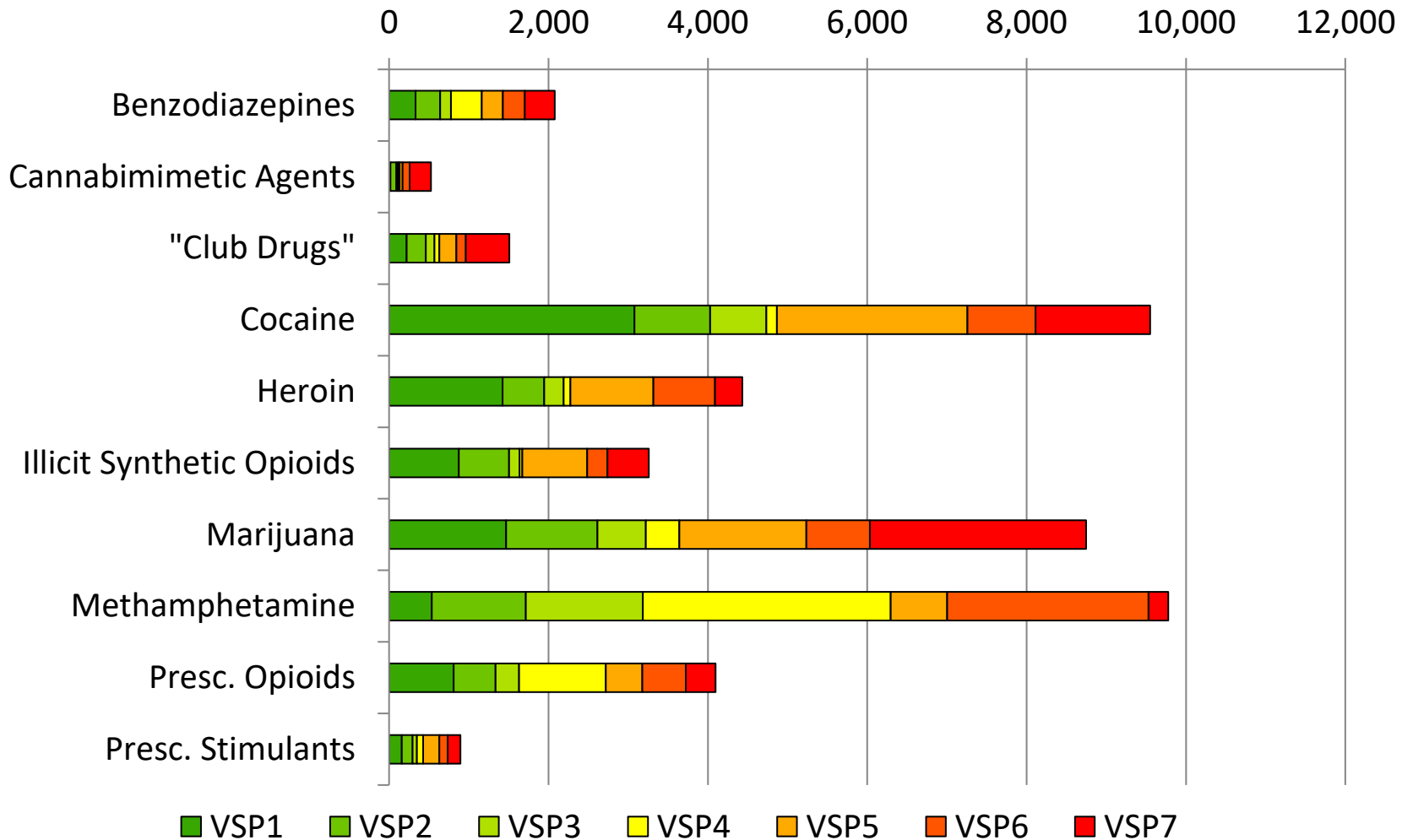
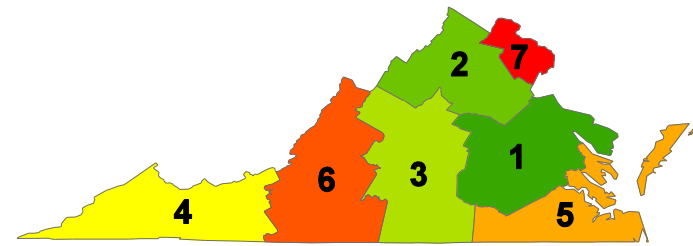
Court District	Locality
27th	Bland County Carroll County Floyd County Galax City Giles County Grayson County Montgomery County Pulaski County Radford City Wythe County
28th	Bristol City Smyth County Washington County
29th	Buchanan County Dickenson County Russell County Tazewell County
30th	Lee County Norton City Scott County Wise County
31st	Manassas City Manassas Park City Prince William County



www.dfs.virginia.gov

Drug Cases Submitted to DFS

Selected Drugs in CY2019, By VSP Division

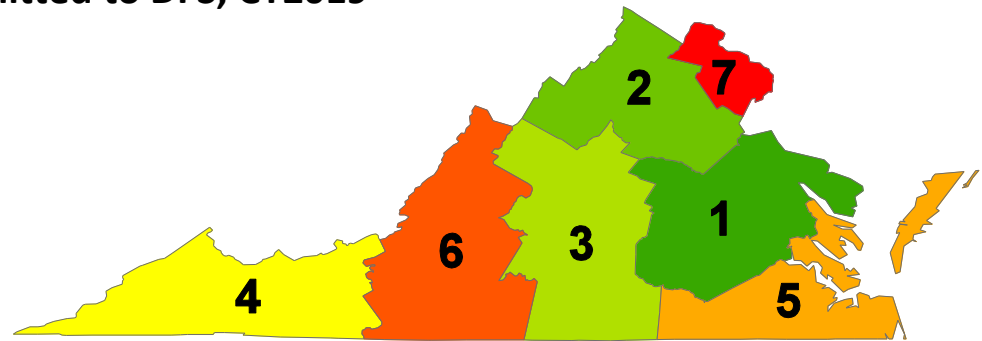


"Illicit Synthetic Opioids" includes fentanyl cases in which the drug is not in the form of a transdermal patch, all fentanyl derivatives, U-47700, and other illicitly-produced synthetic opioids.

Data Source: DFS monthly submission to NFLIS

Regional Variations in Drug Submissions

Distribution of Select Drug Cases Submitted to DFS, CY2019



Drug Category	VSP1	VSP2	VSP3	VSP4	VSP5	VSP6	VSP7	TOTAL
Benzodiazepines	16%	15%	7%	19%	13%	13%	18%	100%
Cannabimimetic Agents	3%	14%	4%	4%	8%	16%	51%	100%
"Club Drugs"	15%	16%	7%	4%	14%	8%	36%	100%
Cocaine	32%	10%	7%	1%	25%	9%	15%	100%
Heroin	32%	12%	6%	2%	24%	17%	8%	100%
Illicit Synthetic Opioid	27%	19%	4%	1%	25%	8%	16%	100%
Marijuana	17%	13%	7%	5%	18%	9%	31%	100%
Methamphetamine	5%	12%	15%	32%	7%	26%	3%	100%
Presc. Opioids	20%	13%	7%	27%	11%	13%	9%	100%
Presc. Stimulants	18%	15%	6%	9%	23%	12%	18%	100%
Census Population	17%	10%	8%	5%	22%	9%	30%	100%

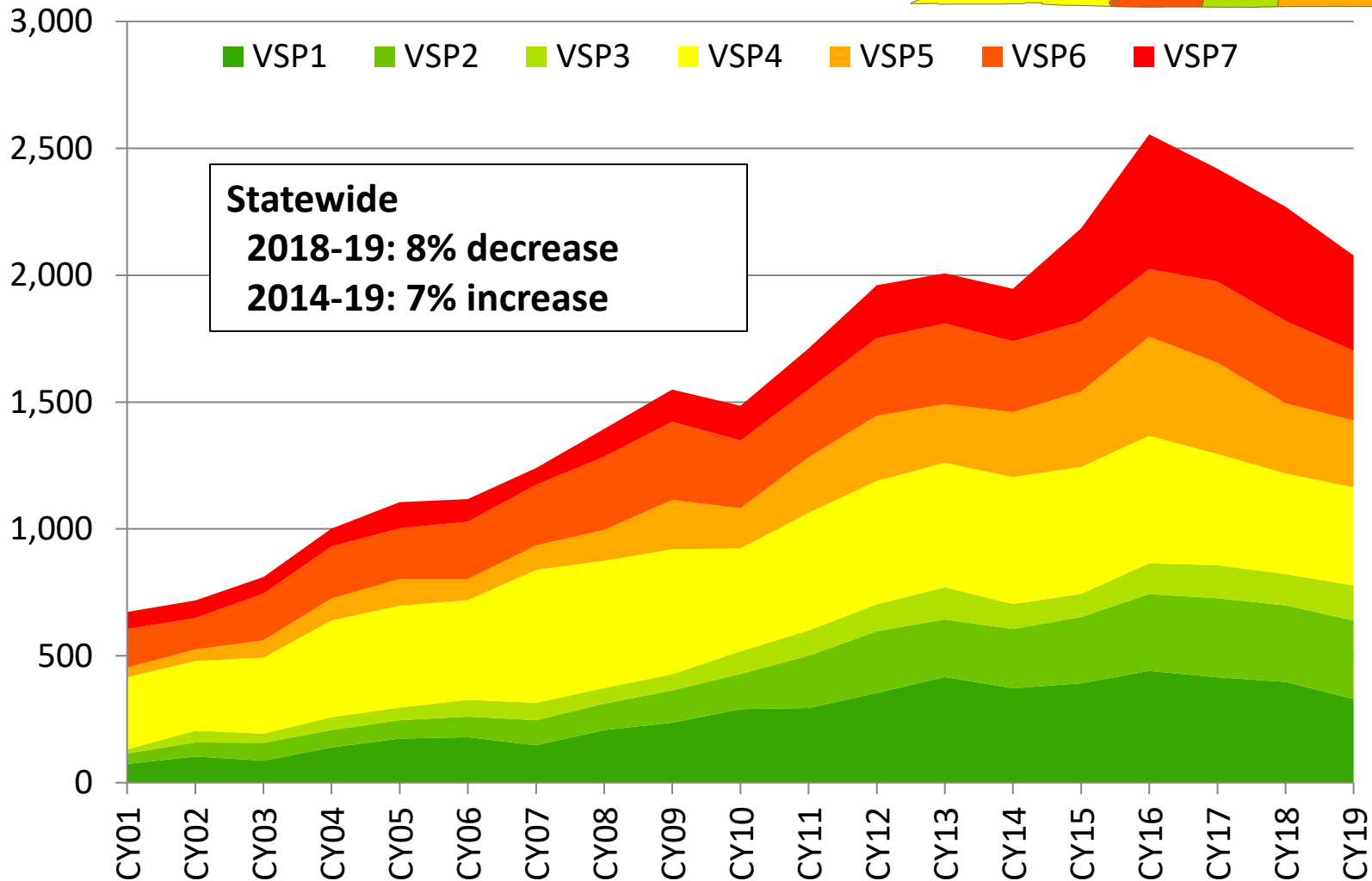
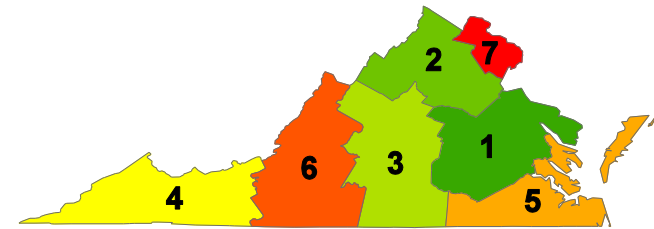
The table above presents the proportion of each of the selected drug types submitted by the individual VSP Divisions. The proportion of the state's population is also presented, for comparison. For example: 19% of benzodiazepine submissions in 2019 were submitted by Division 4, which had 5% of the state population.

Totals may not add to 100%, due to rounding.

Data Source: DFS monthly submission to NFLIS

Benzodiazepine* Submissions

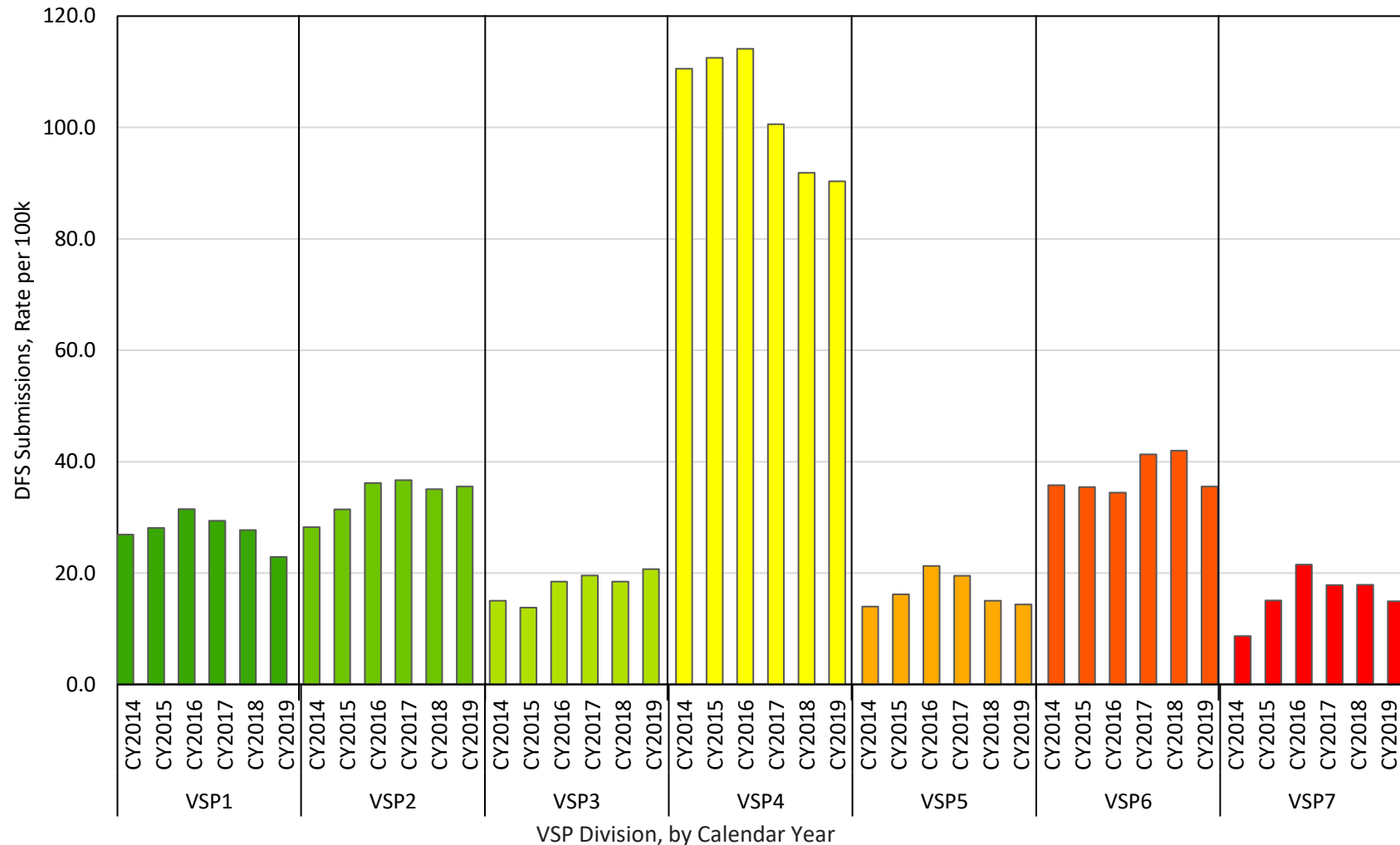
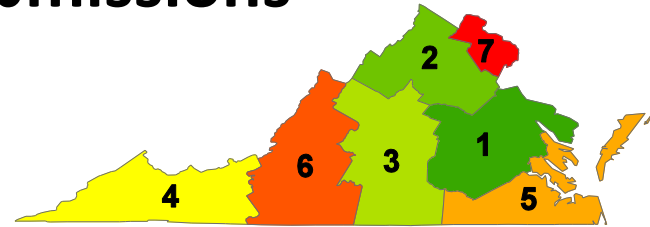
Cases submitted to DFS, calendar years 2001-2019



*Includes both prescription and illicit benzodiazepines. Etizolam, an illicit benzodiazepine, was counted as a Club Drug rather than a benzodiazepine in prior reports.

Regional Benzodiazepine* DFS Submissions

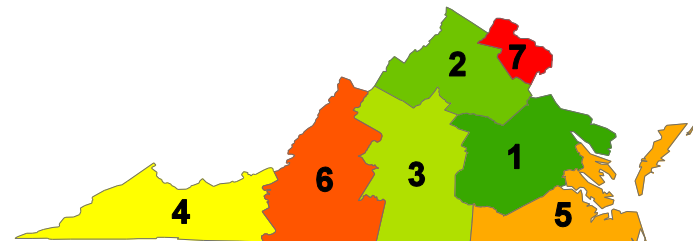
Rate Per 100,000 Population, CY2014-2019



*Includes both prescription and illicit benzodiazepines. Etizolam, an illicit benzodiazepine, was counted as a Club Drug rather than a benzodiazepine in prior reports.

Benzodiazepine* Summary

Statewide and by VSP Division



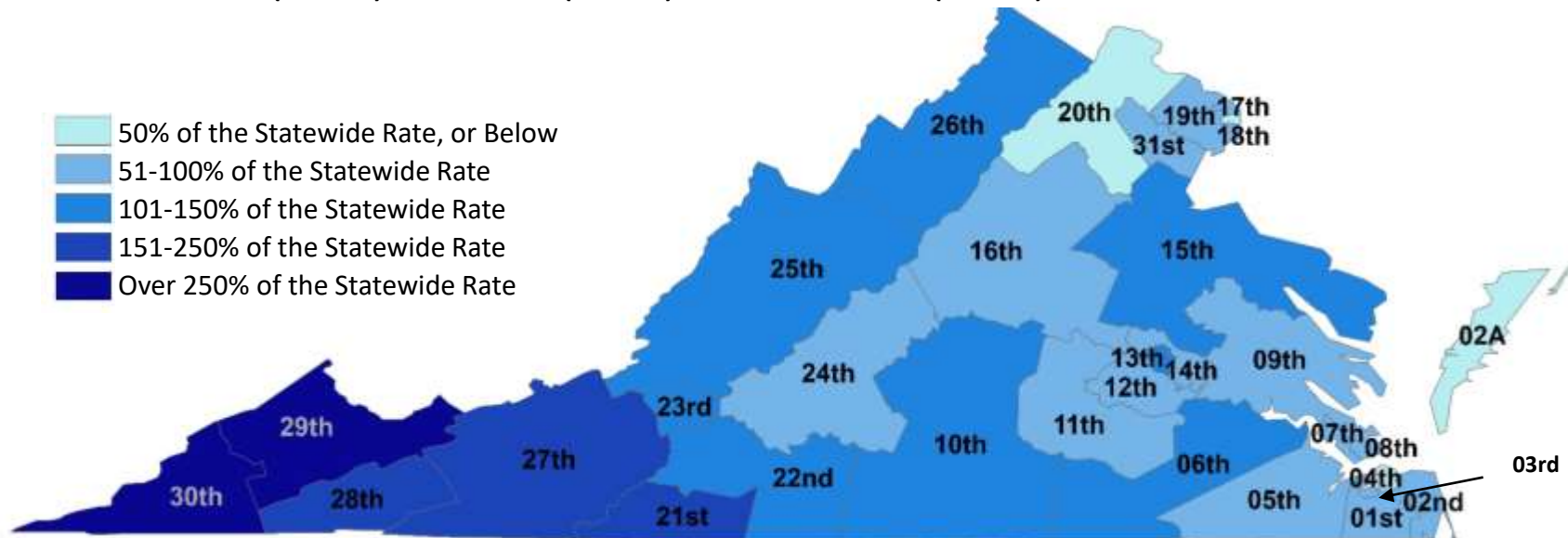
- Number of benzodiazepine case submissions
 - Benzodiazepine cases submitted to DFS decreased 8% statewide between 2018 and 2019.
 - VSP Divisions 4 and 7 reported the largest proportion of the statewide total of benzodiazepine cases in 2019 (19% and 18%, respectively).
 - In 2019, 26% of benzodiazepine submissions included illicitly-produced, rather than prescription, benzodiazepines. Etizolam and flualprazolam were the most common illicit benzodiazepines submitted.
- Rate of submissions, per 100,000 population
 - The 2019 *rate* of benzodiazepine cases submitted by Division 4 was more than twice the rate of Divisions 2 and 6, and more than four times the rate for any other Division.
 - Between 2014 and 2019, the rate of benzodiazepine cases submitted by Division 4 dropped 18%.

*Includes both prescription and illicit benzodiazepines. Etizolam, an illicit benzodiazepine, was counted as a Club Drug rather than a benzodiazepine in prior reports.

Benzodiazepine* Data by Court District

Rate of submissions per 100,000 population, CY2019

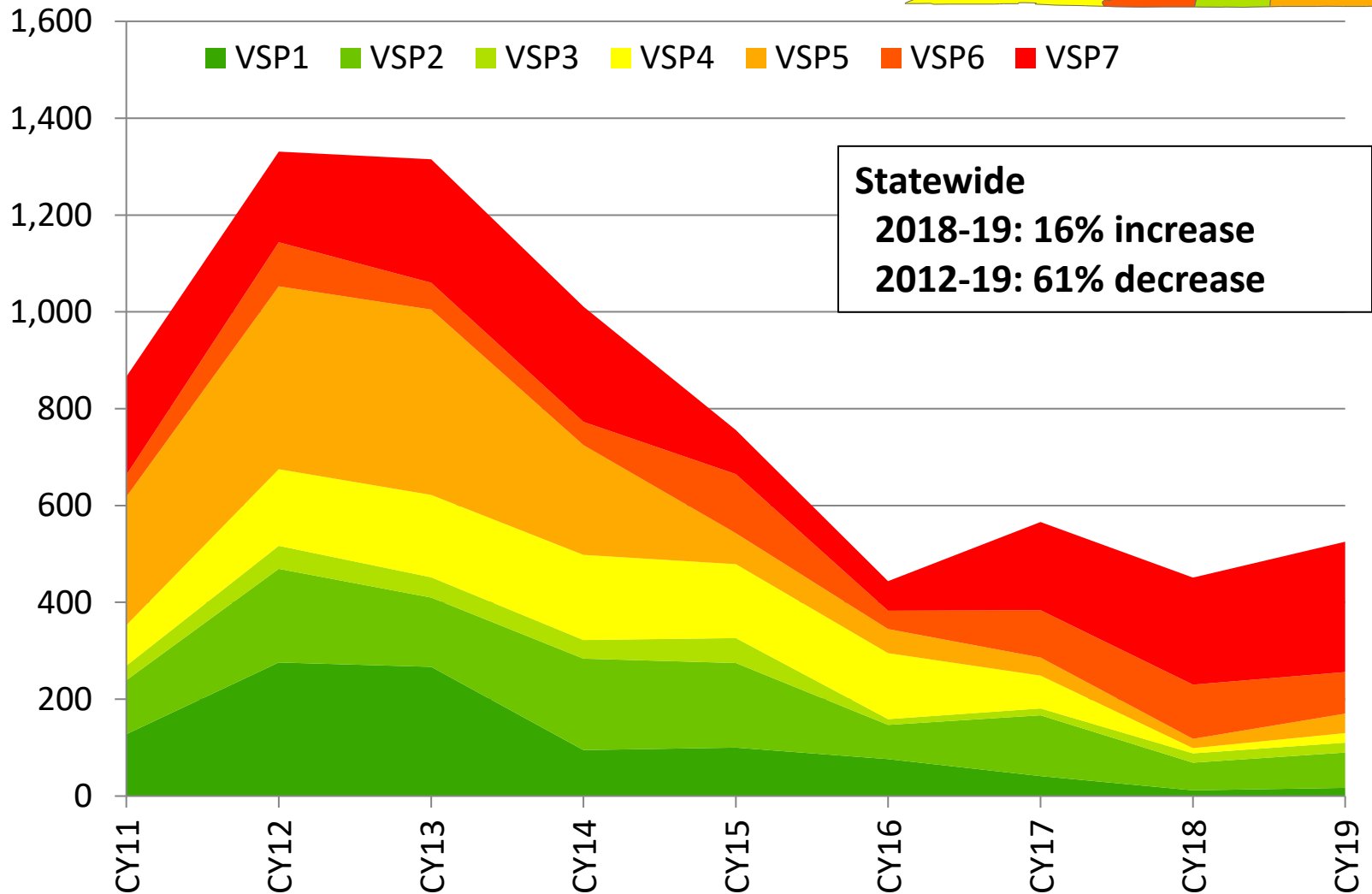
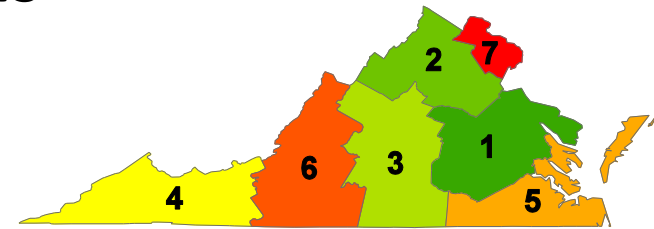
- Statewide, the rate of benzodiazepine submissions to DFS in 2019 was 24.3 per 100,000 population, down 9% from 2018.
- The Court Districts with the highest rate of benzodiazepine submissions in 2019 were the 30th (up 15% from 2018), 29th (down 17%), and 27th (up 23%).
- The Court Districts with the largest increases between 2018 and 2019 were the 5th (72%), the 16th (49%), and 4th (40%).
- The Court Districts with the largest decreases between 2018 and 2019 were District 2A (-50%), the 28th (-37%), and the 20th (-36%).



*Includes both prescription and illicit benzodiazepines. Etizolam, an illicit benzodiazepine, was counted as a Club Drug rather than a benzodiazepine in prior reports.

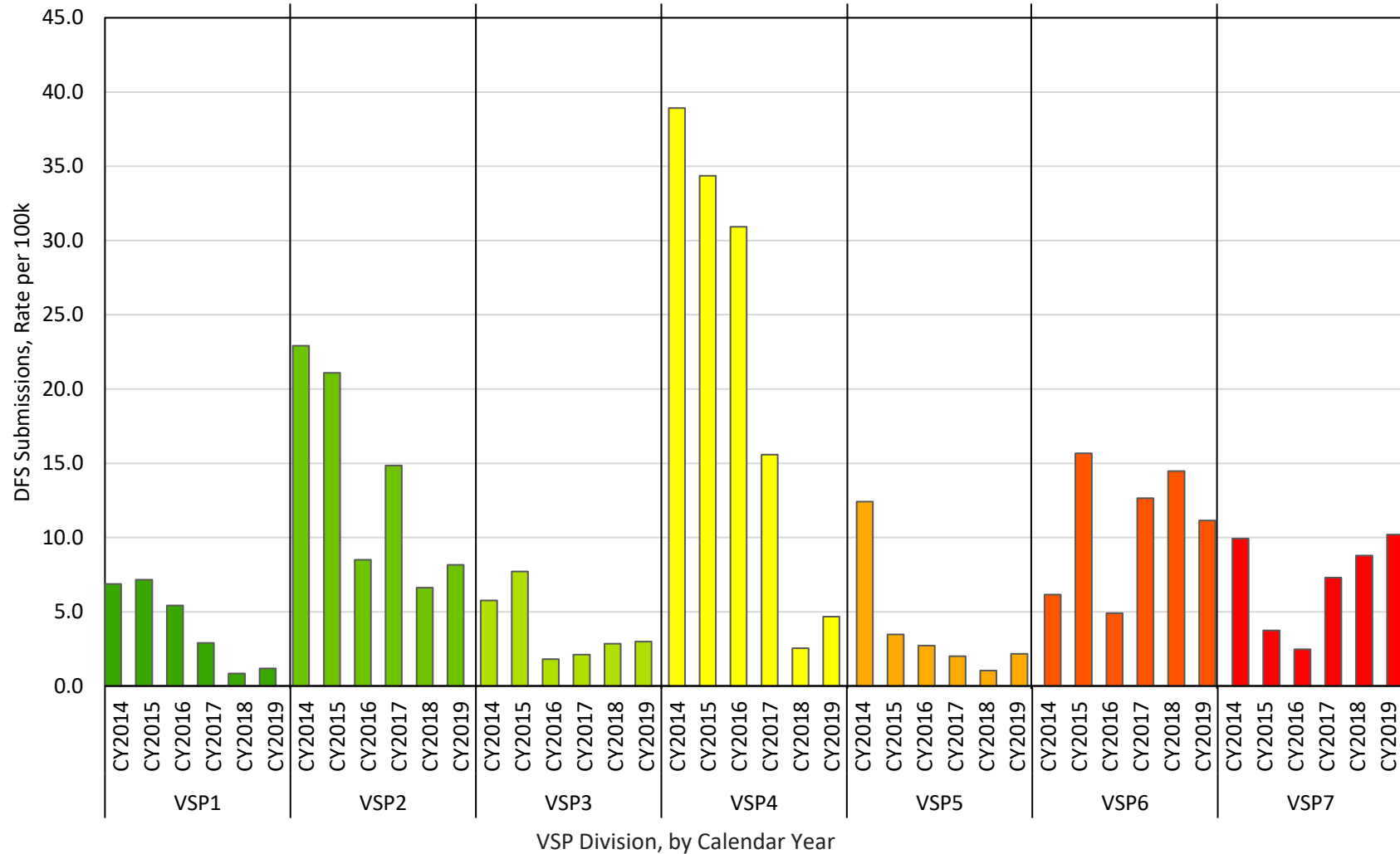
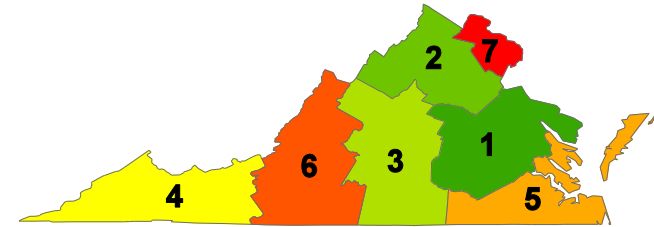
Cannabimimetic Agent Submissions

Cases submitted to DFS, calendar years 2011-2019



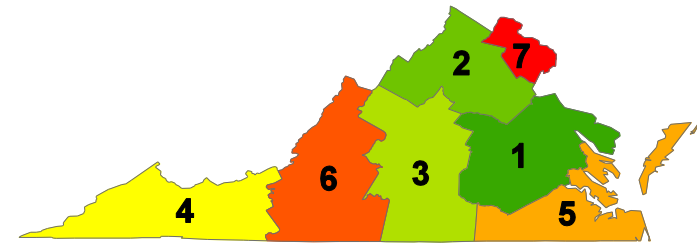
Cannabimimetic Agent DFS Submissions

Rate Per 100,000 Population, CY2014-2019



Cannabimimetic Agent Summary

Statewide and by VSP Division

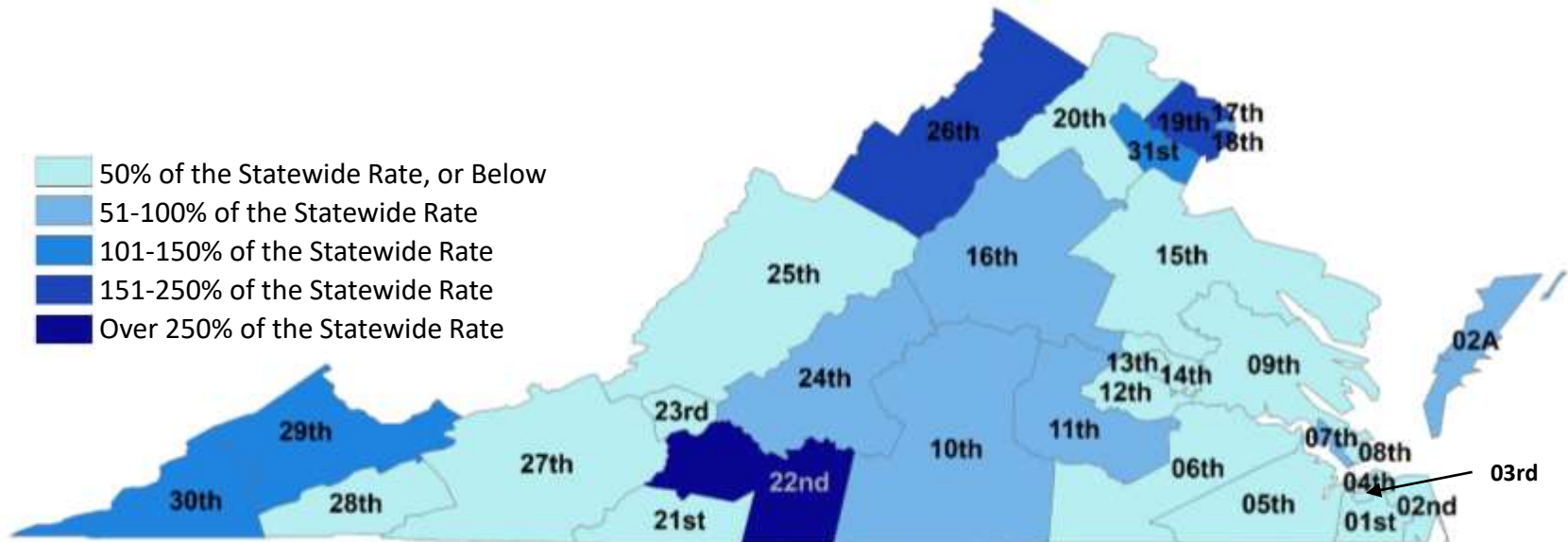


- Number of cannabimimetic agent case submissions
 - Statewide, the number of cannabimimetic agent cases submitted to DFS increased 16% between 2018 and 2019.
 - The increase was highest in Divisions 5 and 4, increasing 111% and 82%, respectively.
 - VSP Divisions 7 and 6 have seen a sharp increase in recent years, rising 341% and 126% (respectively) between 2016 and 2019.
- Rate of submissions, per 100,000 population
 - Prior to 2017, VSP Division 4 consistently had the highest rate of cannabimimetic agent case submissions. Between 2016 and 2019, the rate of cannabimimetic agent case submissions from Division 4 dropped 85%.

Cannabimimetic Agent Data by Court District

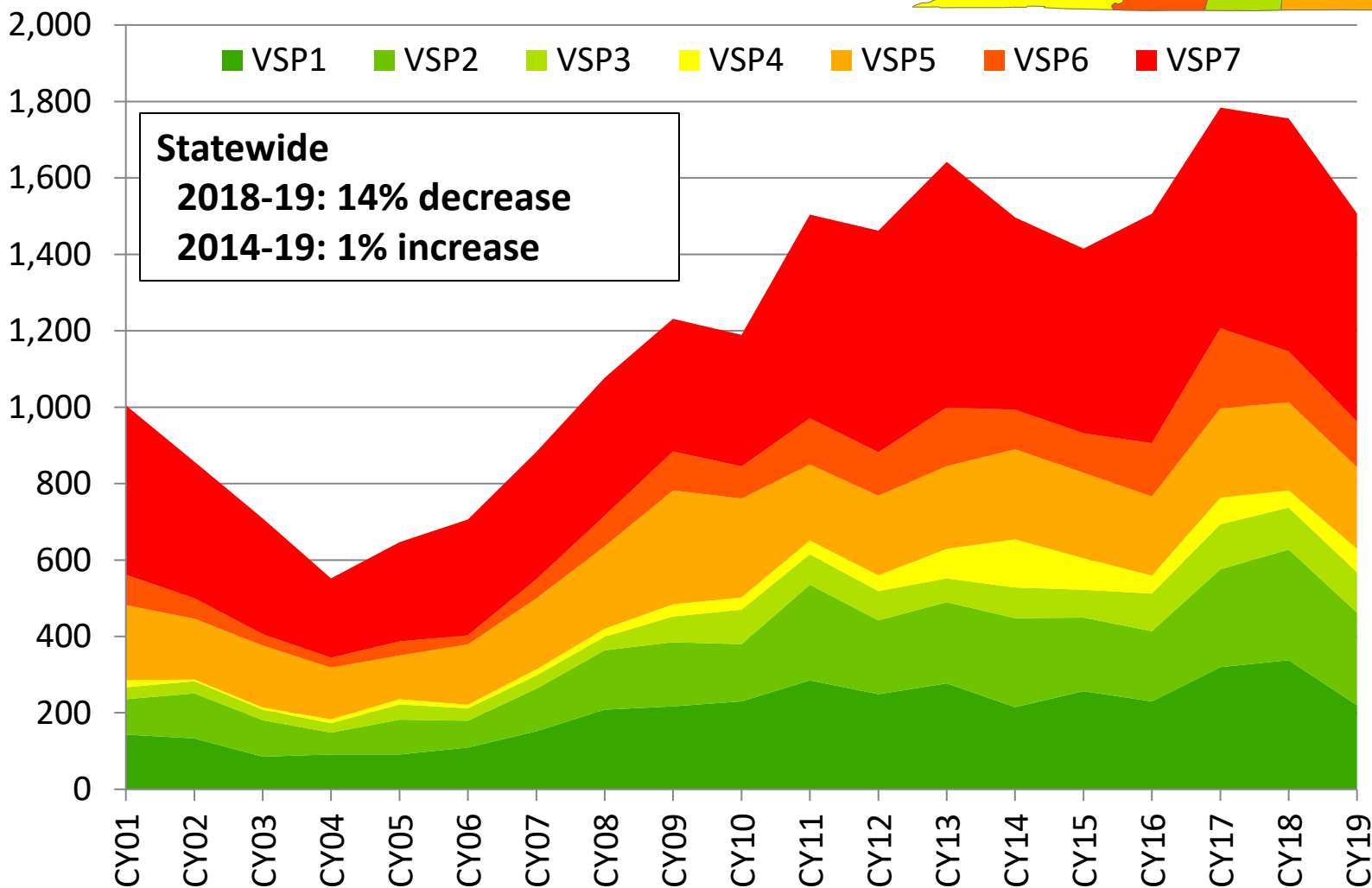
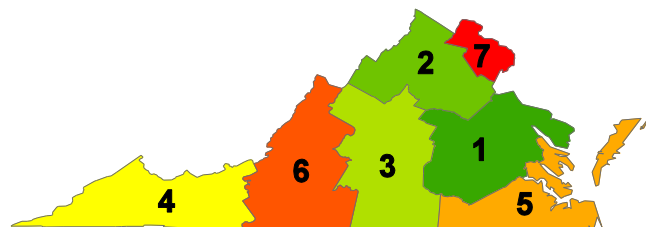
Rate of submissions per 100,000 population, CY2019

- Statewide, the rate of cannabimimetic agent submissions to DFS in 2019 was 6.2 per 100,000 population, up 16% from 2018.
- The Court Districts with the highest rate of cannabimimetic agent submissions in 2019 were the 22nd (down 25% from 2018), 17th (unchanged), and 19th (up 37%).
- The Court Districts with the largest increases between 2018 and 2019 were the 2nd (1,100%), 24th (350%), and 7th (233%). Despite the increase, the submission rate for each of these Districts was below the statewide rate.
- The 3rd, 6th, 21st, and 23rd Court Districts all had a rate of 0.0 in 2019.



“Club Drug”* Submissions

Cases submitted to DFS, calendar years 2001-2019

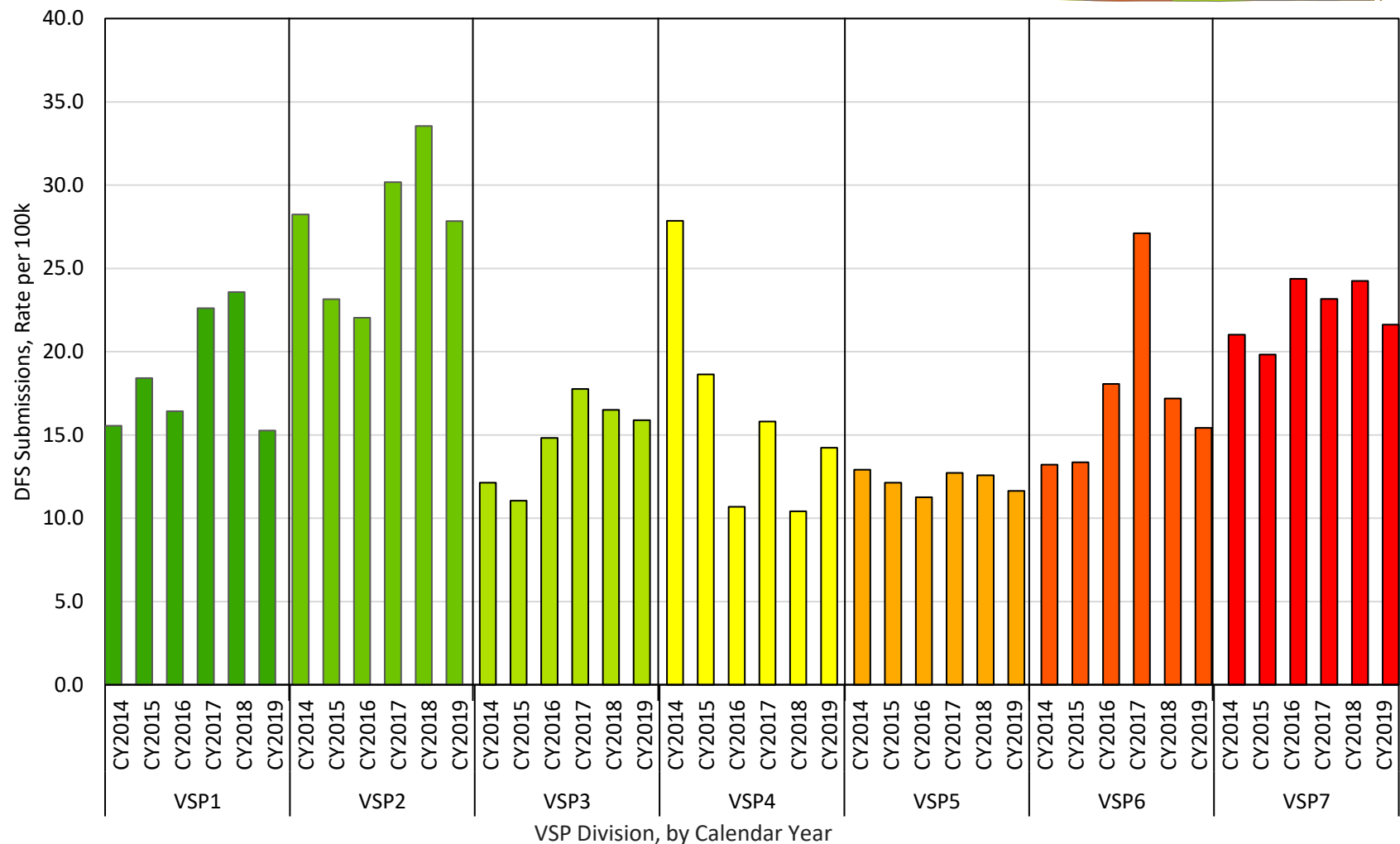
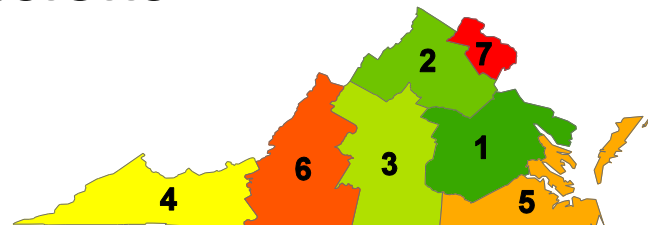


*Etizolam, an illicit benzodiazepine, was counted as a Club Drug rather than a benzodiazepine in prior reports.

Data Source: DFS monthly submission to NFLIS

Regional "Club Drug"* DFS Submissions

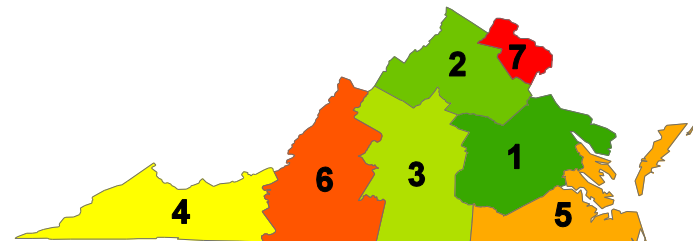
Rate Per 100,000 Population, CY2014-2019



*Etizolam, an illicit benzodiazepine, was counted as a Club Drug rather than a benzodiazepine in prior reports.

“Club Drug”* Summary

Statewide and by VSP Division



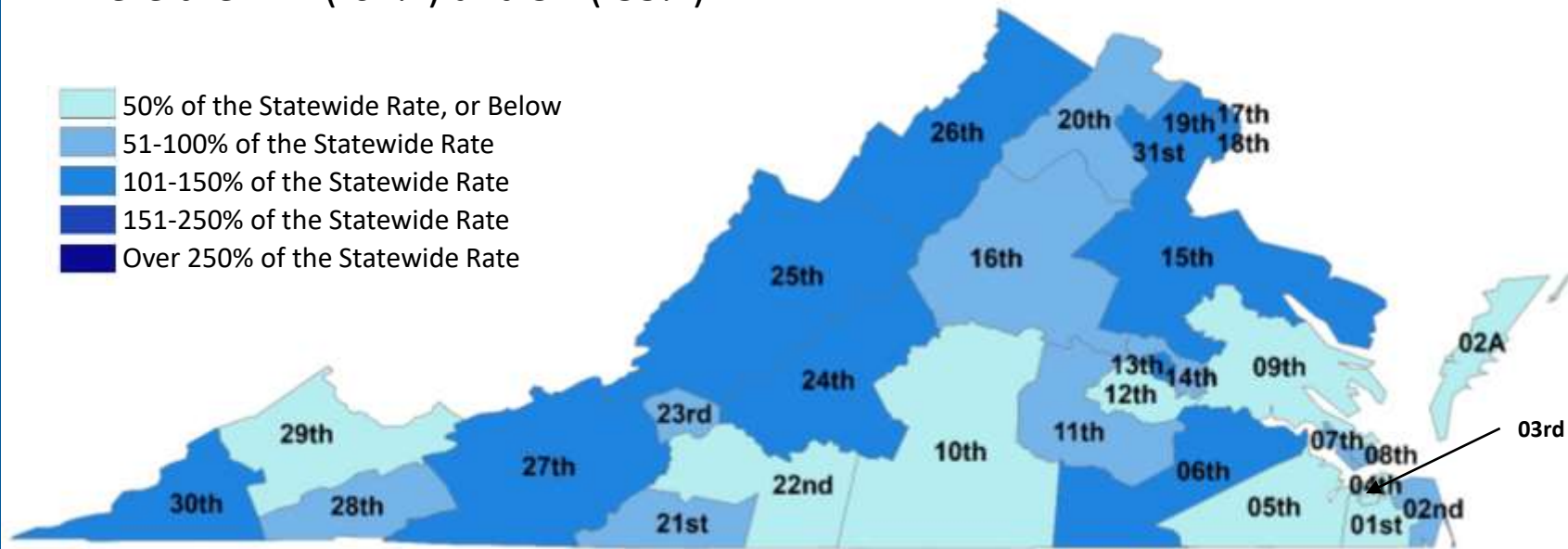
- Number of “club drug” case submissions
 - Statewide, “club drug” cases submitted to DFS decreased 14% between 2018 and 2019.
 - VSP Division 7 submitted the largest proportion (36%) of the statewide total number of “club drug” cases in 2019.
 - Relatively few cases were submitted in 2019 by Division 4 (5% of the statewide total).
- Rate of submissions, per 100,000 population
 - Division 2 had the highest rate of “club drug” case submissions in 2019 (down 17% from 2018).
 - The spike in Division 4 in 2014 was driven by a large number of arrests for alpha-PVP, also known as “flakka,” a stimulant with hallucinogenic properties.

*Etizolam, an illicit benzodiazepine, was counted as a Club Drug rather than a benzodiazepine in prior reports.

“Club Drug”* Data by Court District

Rate of submissions per 100,000 population, CY2019

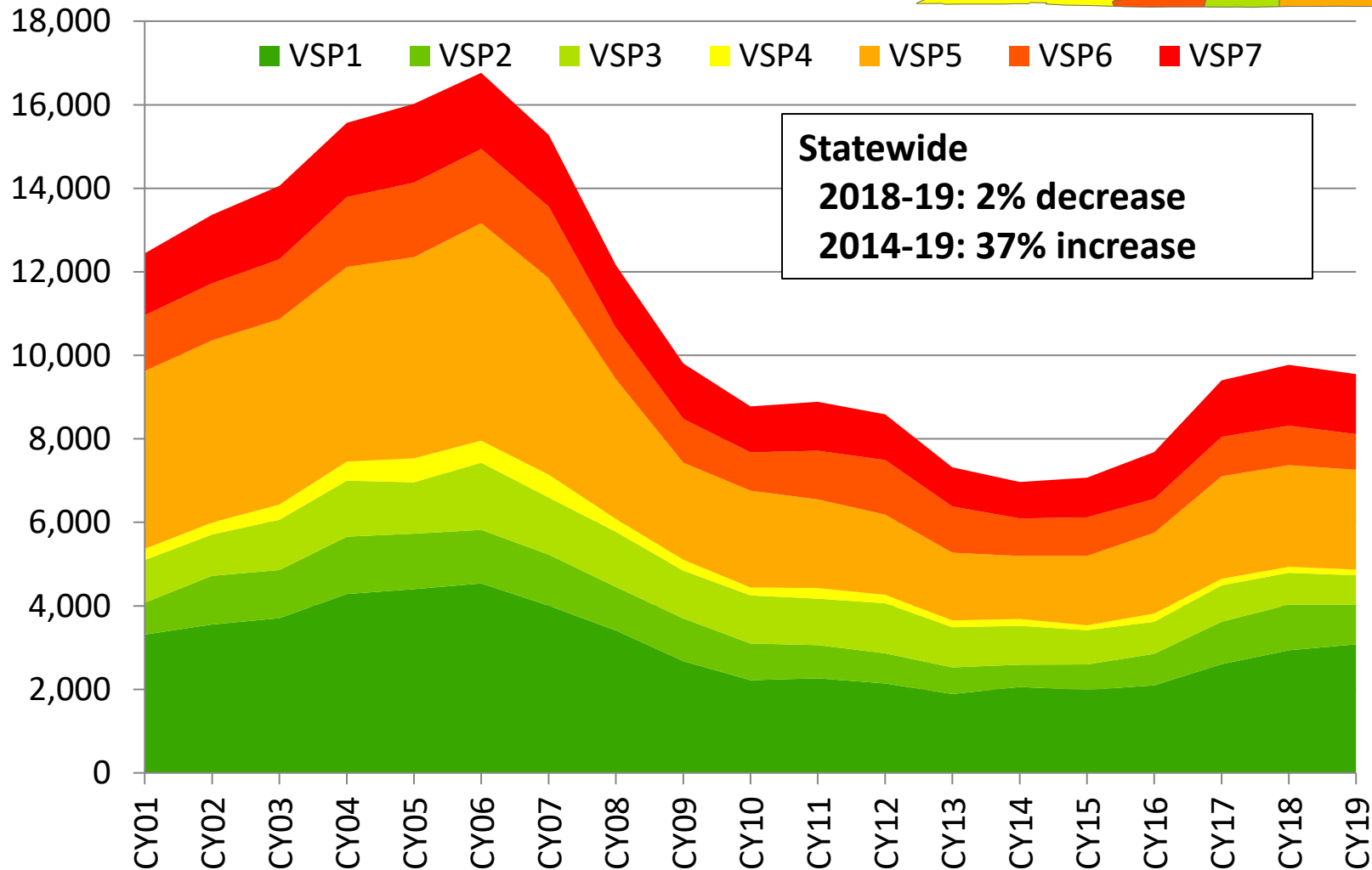
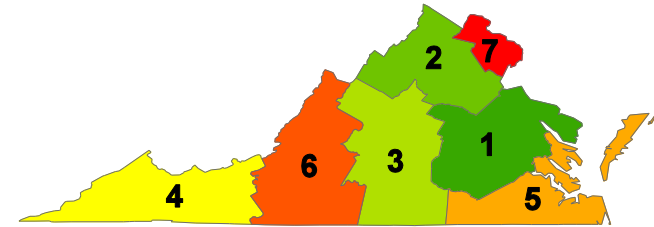
- Statewide, the rate of “club drug” submissions to DFS in 2019 was 17.7 per 100,000 population, down 14% from 2018.
- The Court Districts with the highest rate of “club drug” submissions in 2019 were the 15th (down 37% from 2018), 31st (up 1%), and 17th (down 18%).
- The Court Districts with the largest increases between 2018 and 2019 were the 30th (90%), 4th (83%), and the 29th (67%).
- The Court Districts with the largest decreases between 2018 and 2019 were the 21st (-61%) and 5th (-55%).



*Etizolam, an illicit benzodiazepine, was counted as a Club Drug rather than a benzodiazepine in prior reports.

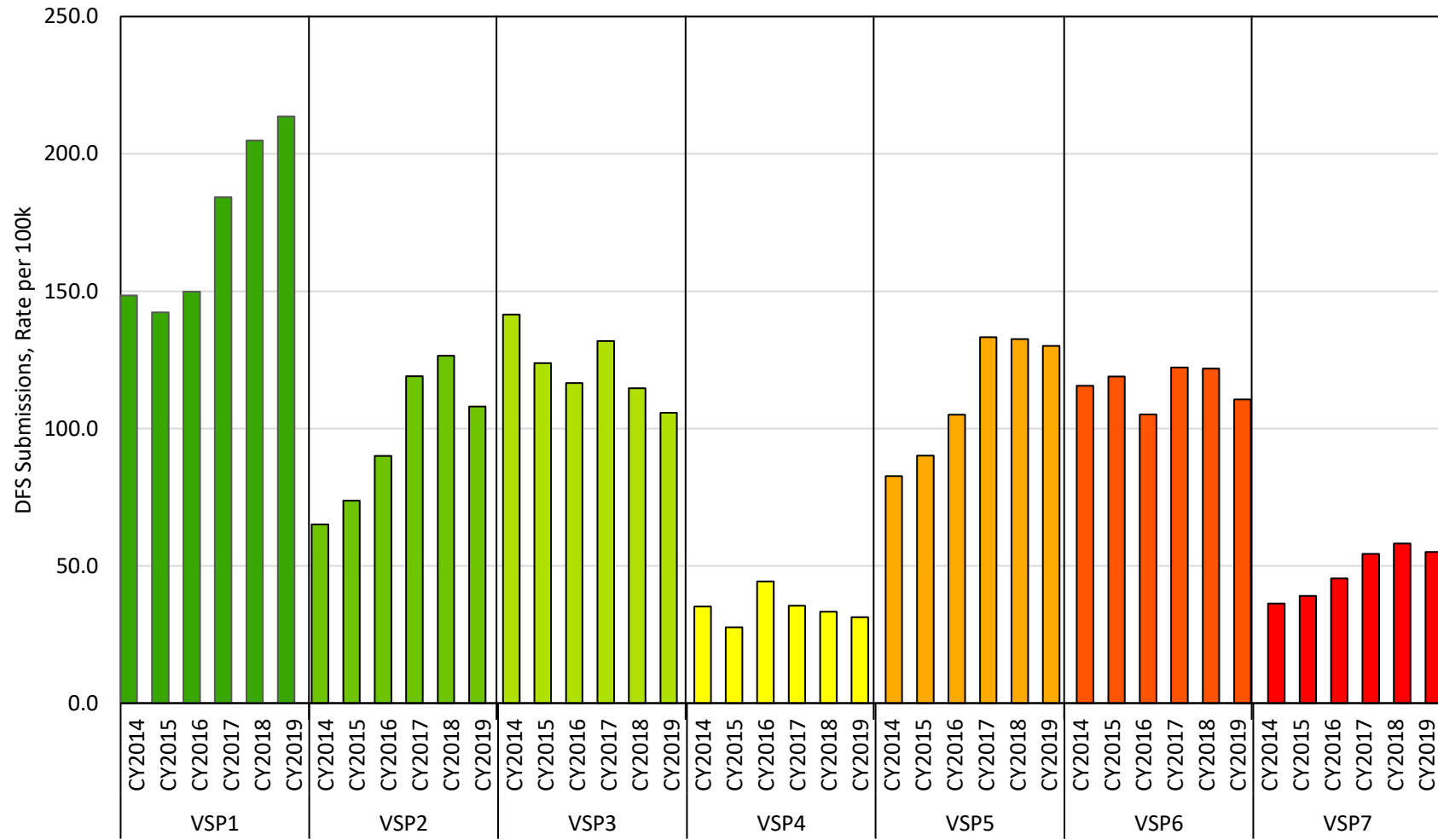
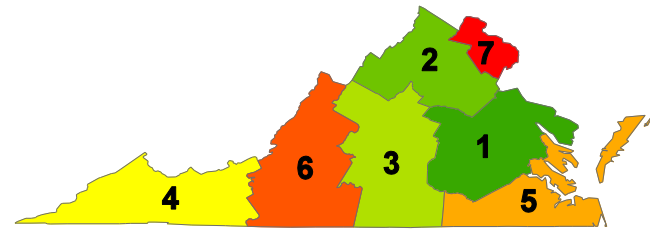
Cocaine Submissions

Cases submitted to DFS, calendar years 2001-2019



Regional Cocaine DFS Submissions

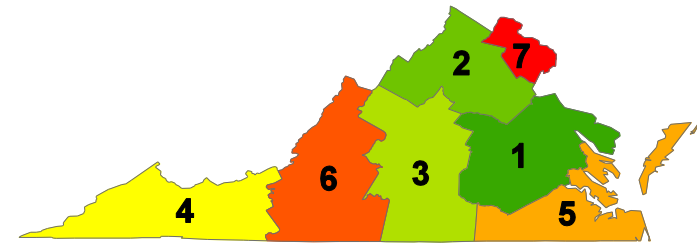
Rate Per 100,000 Population, CY2014-2019



VSP Division, by Calendar Year

Cocaine Summary

Statewide and by VSP Division

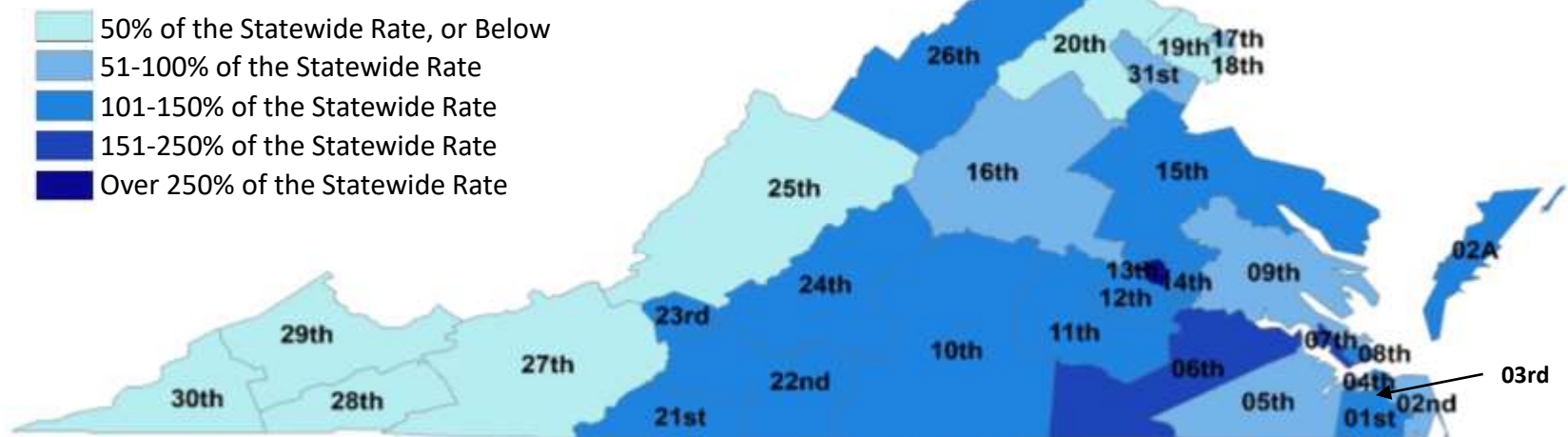


- Number of cocaine case submissions
 - Statewide, cocaine cases submitted to DFS decreased 2% between 2018 and 2019, the first drop since 2014.
 - VSP Divisions 1 and 5 submitted the majority of the statewide total number of cocaine cases in 2019 (32% and 25%, respectively).
 - Relatively few cases were submitted by Division 4 (1% of the statewide total).
- Rate of submissions, per 100,000 population
 - VSP Division 1 had highest rate of cocaine submissions in 2019 (up 4% from 2018), followed by Division 5 (down 2%).
 - Division 2 had the largest decrease in the rate of cocaine submissions between 2018 and 2019 (14%).

Cocaine Data by Court District

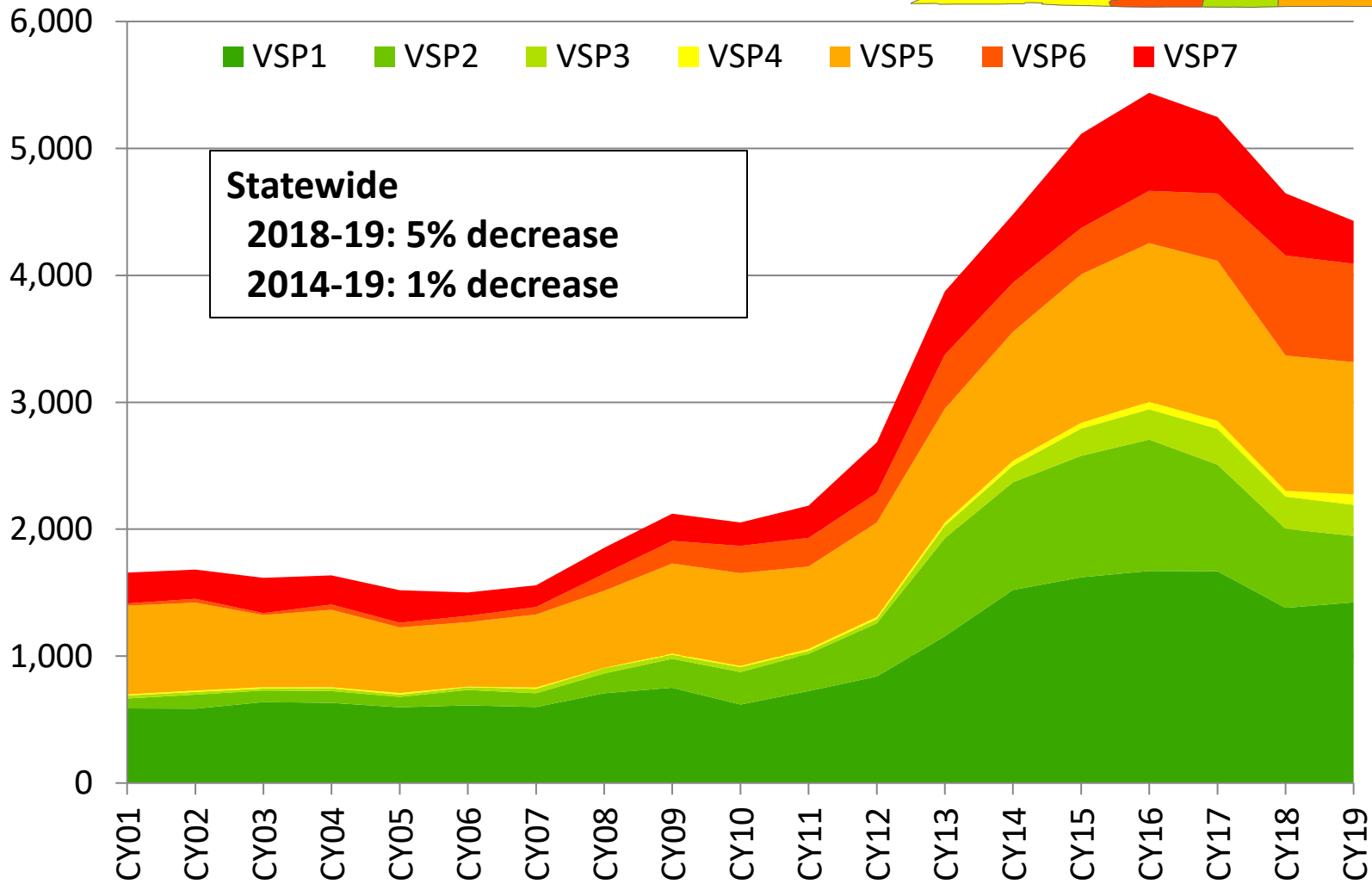
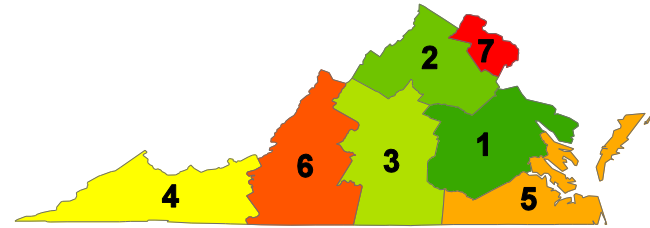
Rate of submissions per 100,000 population, CY2019

- Statewide, the rate of cocaine submissions to DFS in 2019 was 111.9 per 100,000 population, down 2% from 2018.
- The Court Districts with the highest rate of cocaine submissions in 2019 were the 13th (up 8% from 2018), 7th (up 27%), and 6th (up 14%).
- The Court Districts with the largest increases between 2018 and 2019 were the 30th (91%), 1st (36%), and the 28th (29%).
- The Court Districts with the largest decreases between 2018 and 2019 were the 29th (-44%), 20th (-25%), and 16th (-21%).



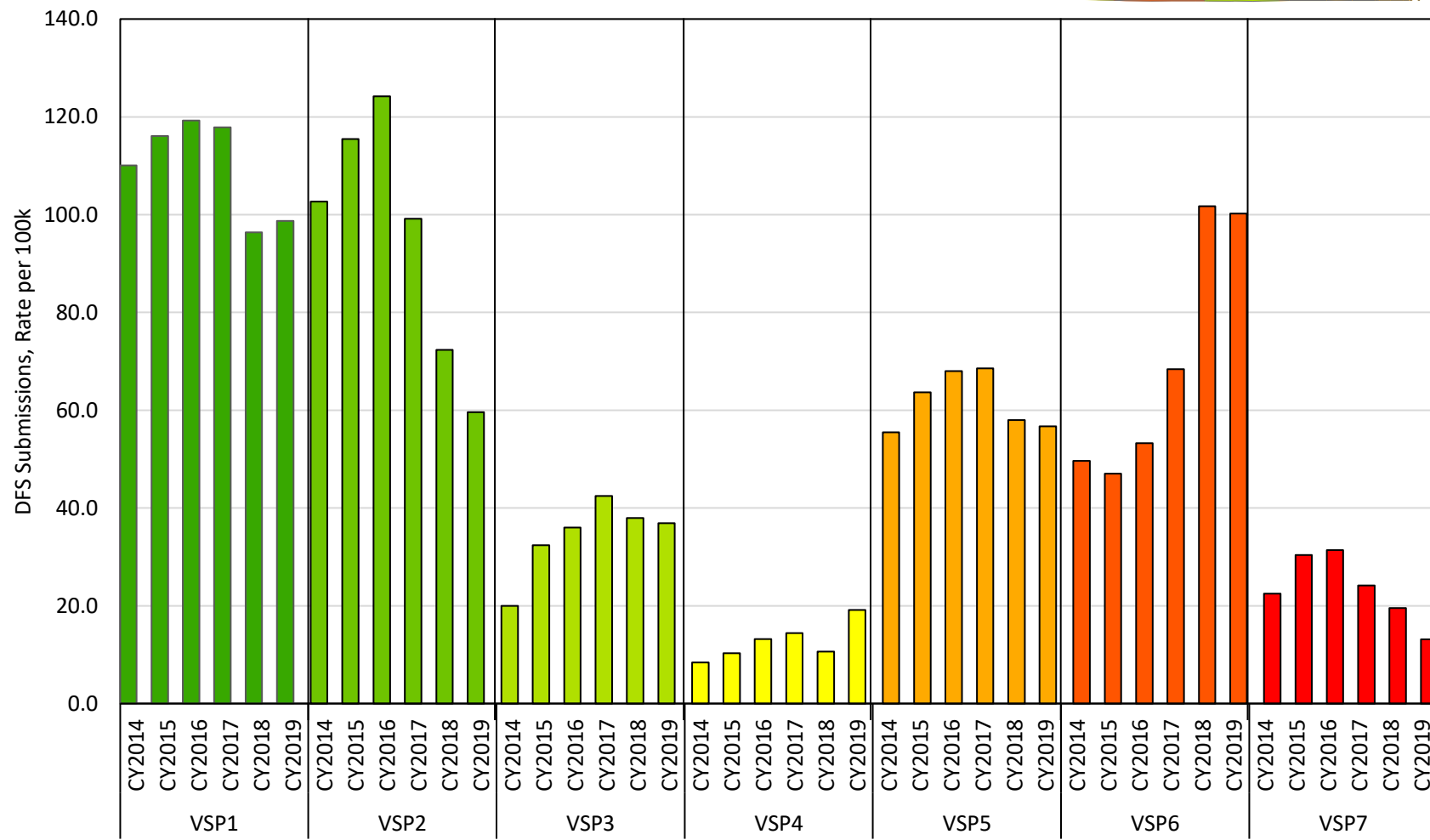
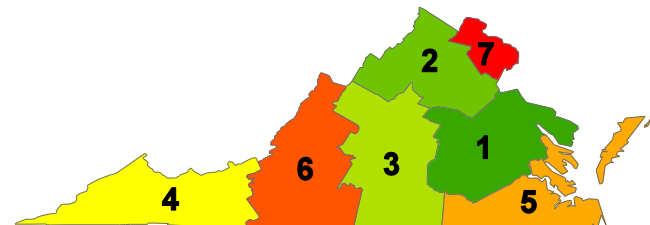
Heroin Submissions

Cases submitted to DFS, calendar years 2001-2019



Regional Heroin DFS Submissions

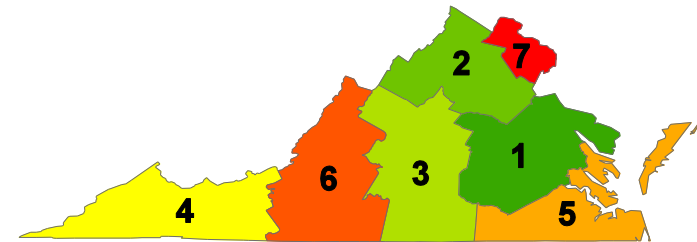
Rate Per 100,000 Population, CY2014-2019



VSP Division, by Calendar Year

Heroin Summary

Statewide and by VSP Division

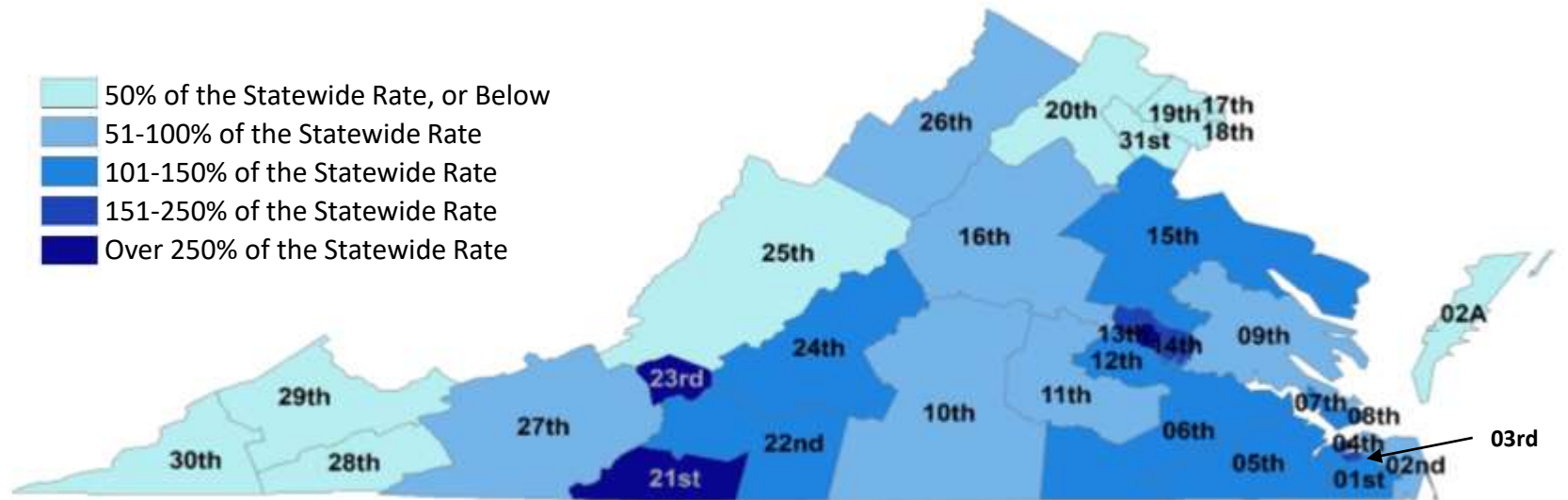


- Number of heroin case submissions
 - Statewide, heroin cases submitted to DFS decreased 5% statewide between 2018 and 2019, the third year in a row that submissions decreased.
 - VSP Divisions 1 and 5 submitted the majority of the statewide total number of heroin cases in 2019 (32% and 24%, respectively).
 - Relatively few cases (1% of the statewide total) were submitted by Division 4 in 2019, despite increasing 78% from 2018.
- Rate of submissions, per 100,000 population
 - The rate of heroin cases submitted from Division 2 decreased 17% between 2018 and 2019.
 - Between 2018 and 2019, the rate of heroin submissions from Division 6 dropped 1%, after increasing 48% between 2017 and 2018.

Heroin Data by Court District

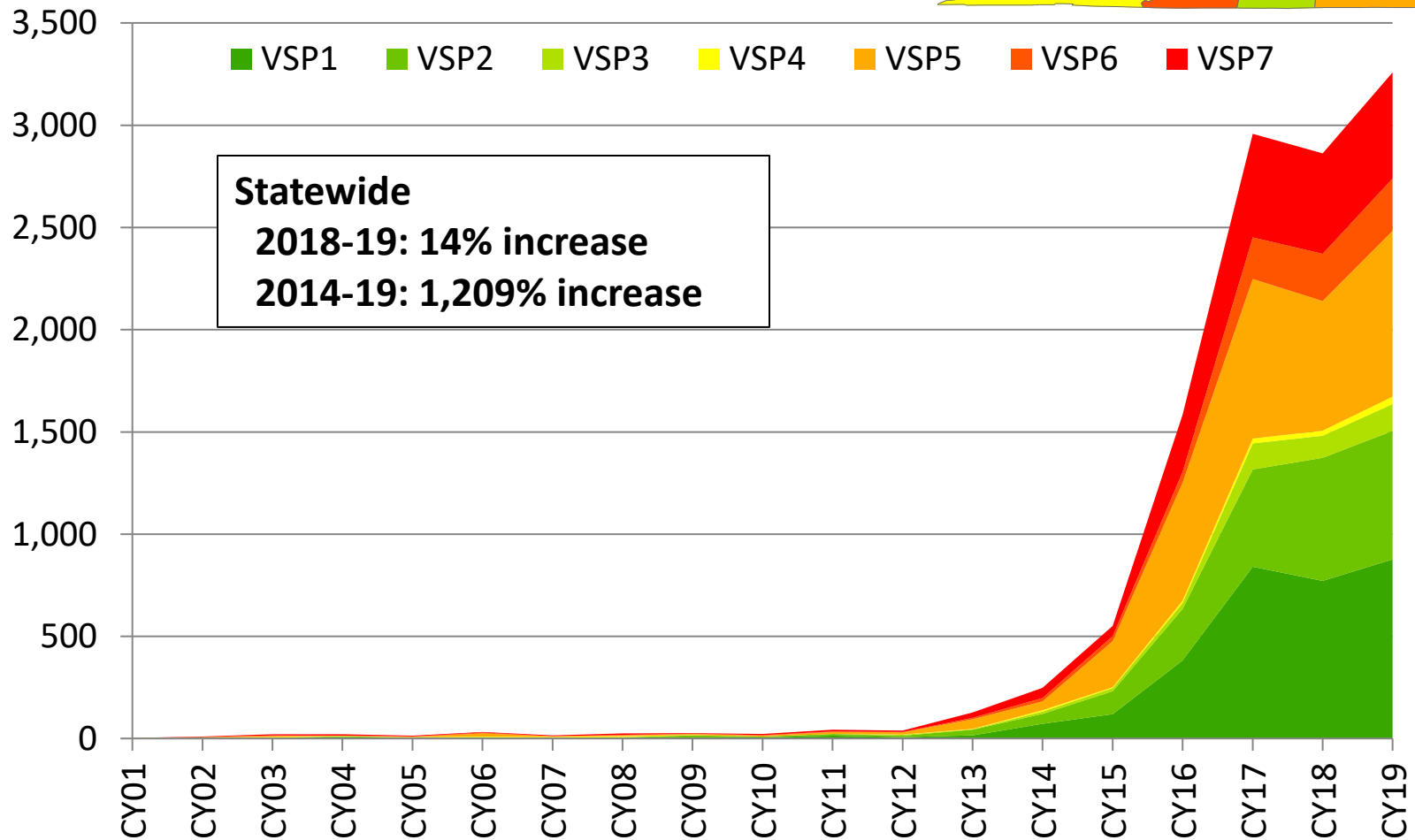
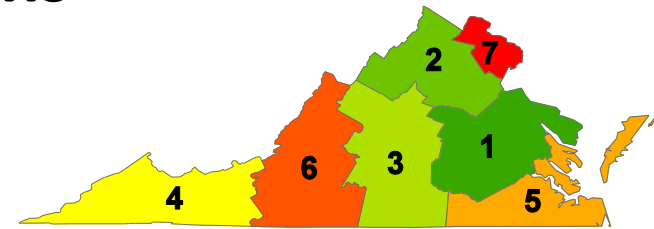
Rate of submissions per 100,000 population, CY2019

- Statewide, the rate of heroin submissions to DFS in 2019 was 51.9 per 100,000 population, down 5% from 2018.
- The Court Districts with the highest rate of heroin submissions in 2019 were the 13th (up 10% from 2018), 21st (up 23%), and 23rd (down 10%).
- The Court Districts with the largest increases between 2018 and 2019 were the 30th (250%), 5th (54%), and the 29th (50%).
- The Court Districts with the largest decreases between 2018 and 2019 were the 25th (-48%), and 17th (-40%).



Illicit Synthetic Opioid* Submissions

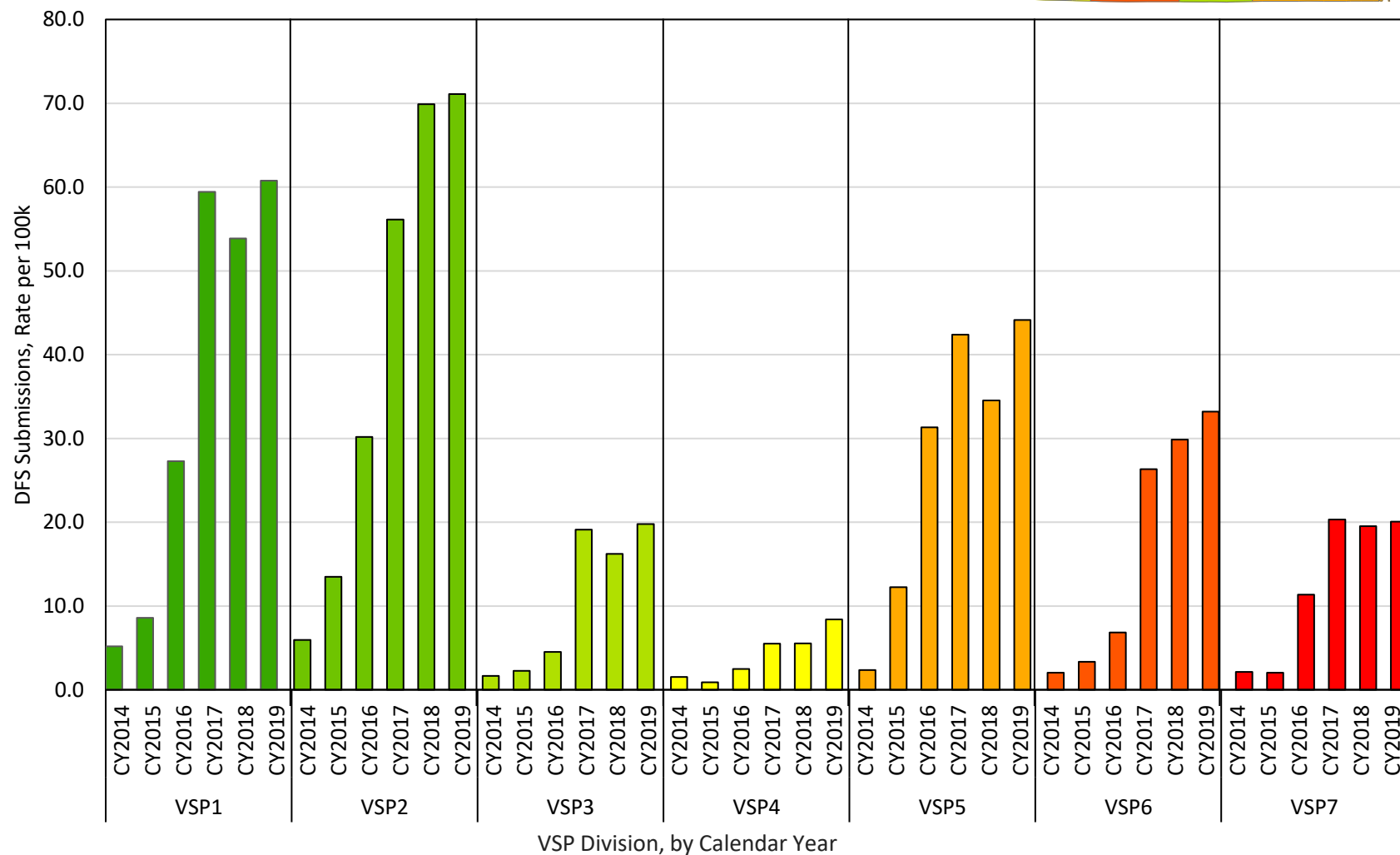
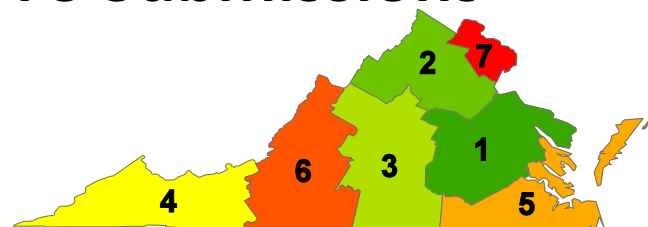
Cases submitted to DFS, calendar years 2001-2019



*Includes fentanyl cases in which the drug is not in the form of a transdermal patch, all fentanyl derivatives, U-47700, and other illicitly-produced synthetic opioids.

Regional Illicit Synthetic Opioid* DFS Submissions

Rate Per 100,000 Population, CY2014-2019

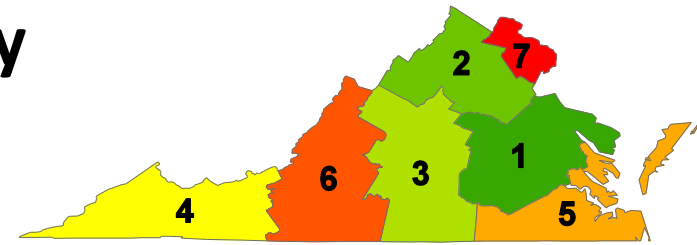


*Includes fentanyl cases in which the drug is not in the form of a transdermal patch, all fentanyl derivatives, U-47700, and other illicitly-produced synthetic opioids.

Data Source: DFS monthly submission to NFLIS

Illicit Synthetic Opioid* Summary

Statewide and by VSP Division



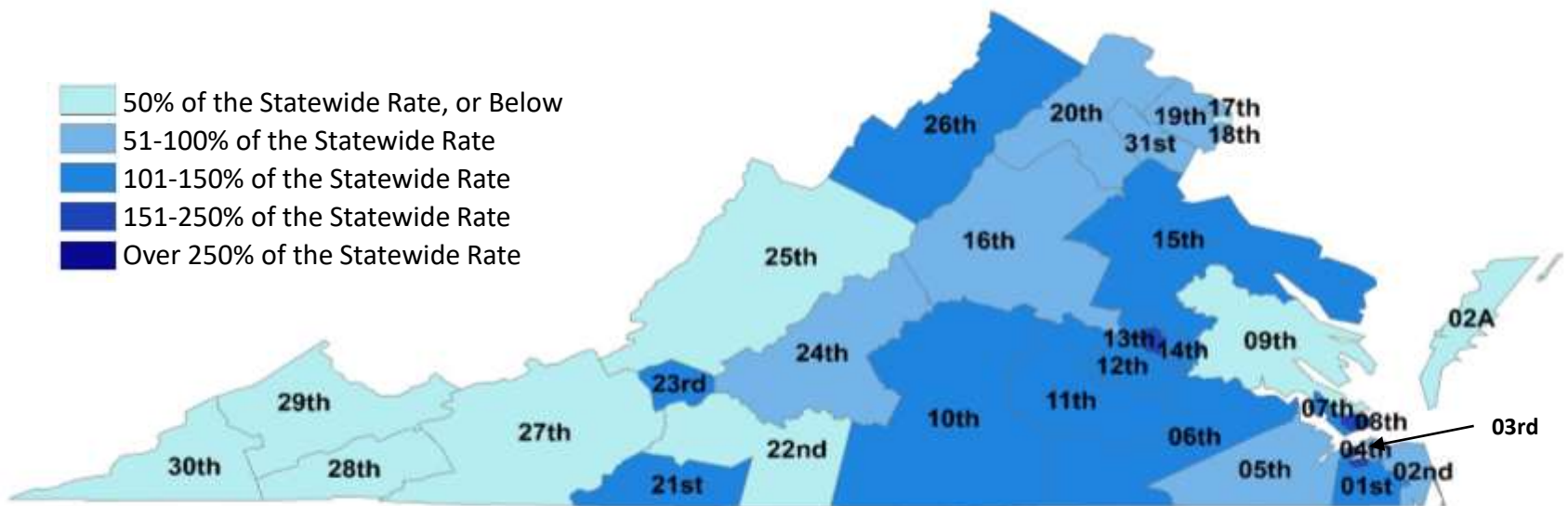
- Number of illicit synthetic opioid case submissions
 - Illicit synthetic opioid cases submitted to DFS increased 14% statewide between 2018 and 2019.
 - Illicit synthetic opioid cases began increasing rapidly in 2013. Between 2013 and 2017, cases increased 2,212%, then dropped 3% in 2018.
 - VSP Divisions 1 and 5 submitted the majority of the statewide total number of illicit fentanyl cases in 2019 (27% and 25% of the statewide total, respectively).
- Rate of submissions, per 100,000 population
 - Division 2 had the highest rate of illicit synthetic opioid case submissions in 2019 (up 4% from 2018).
 - No Divisions saw a drop in submissions in 2019.

*Includes fentanyl cases in which the drug is not in the form of a transdermal patch, all fentanyl derivatives, U-47700, and other illicitly-produced synthetic opioids.

Illicit Synthetic Opioid* Data by Court District

Rate of submissions per 100,000 population, CY2019

- Statewide, the rate of illicit synthetic opioid submissions to DFS in 2019 was 38.2 per 100,000 population, up 14% from 2018.
- The Court Districts with the highest rate of illicit synthetic opioid submissions in 2019 were the 13th (up 22% from 2018), 3rd (up 12%), and 8th (up 102%).
- The Court Districts with the largest increases between 2018 and 2019 were the 30th (200%), 2A (150%), and the 29th (129%).
- The Court Districts with the largest decreases between 2018 and 2019 were the 28th (-67%), 22nd (-41%), and 21st (-40%).

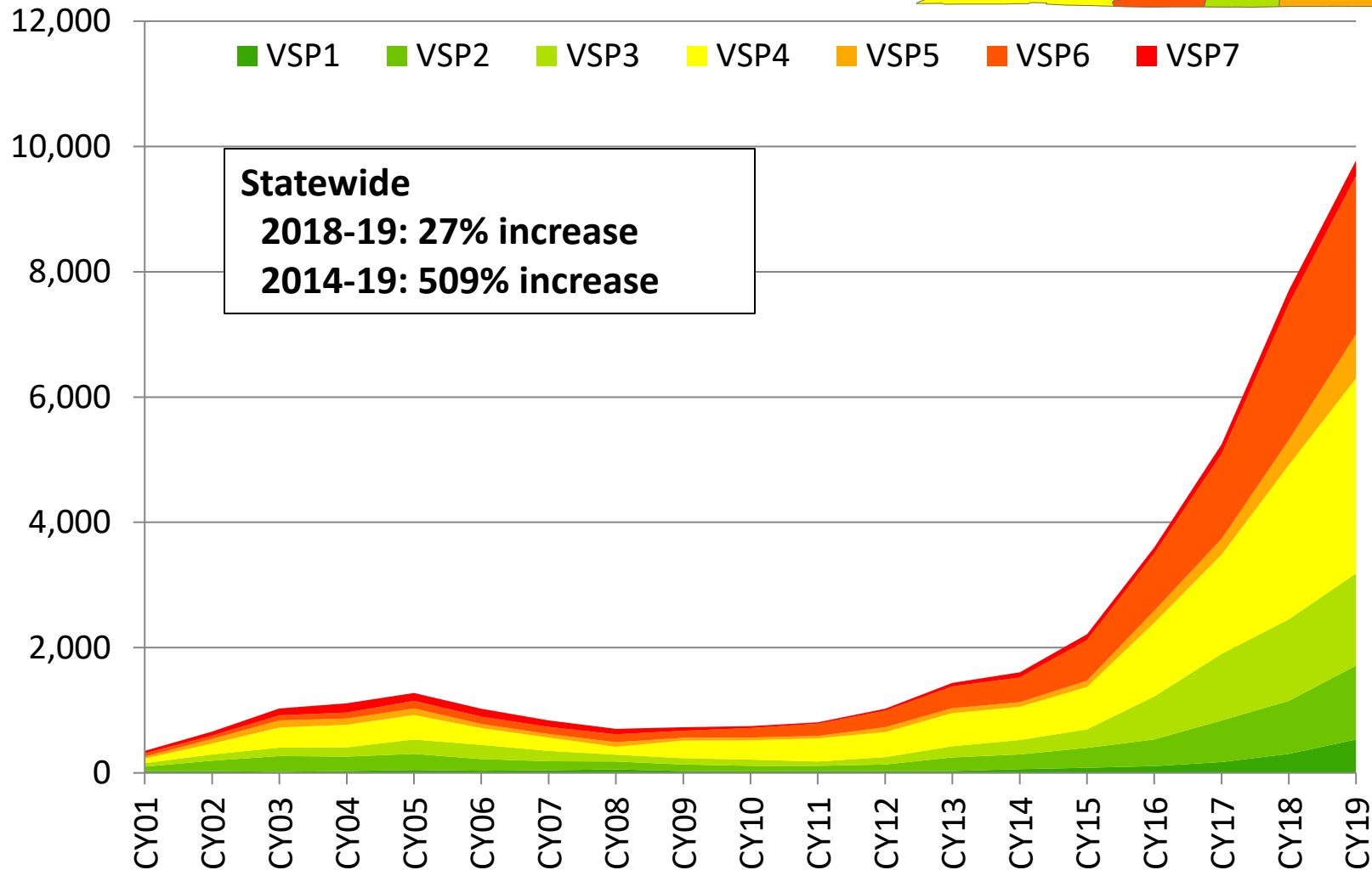
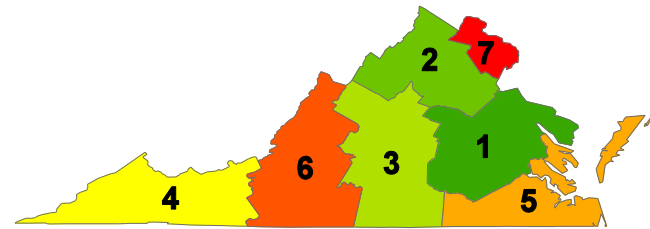


*Includes fentanyl cases in which the drug is not in the form of a transdermal patch, all fentanyl derivatives, U-47700, and other illicitly-produced synthetic opioids.

Data Source: DFS monthly submission to NFLIS

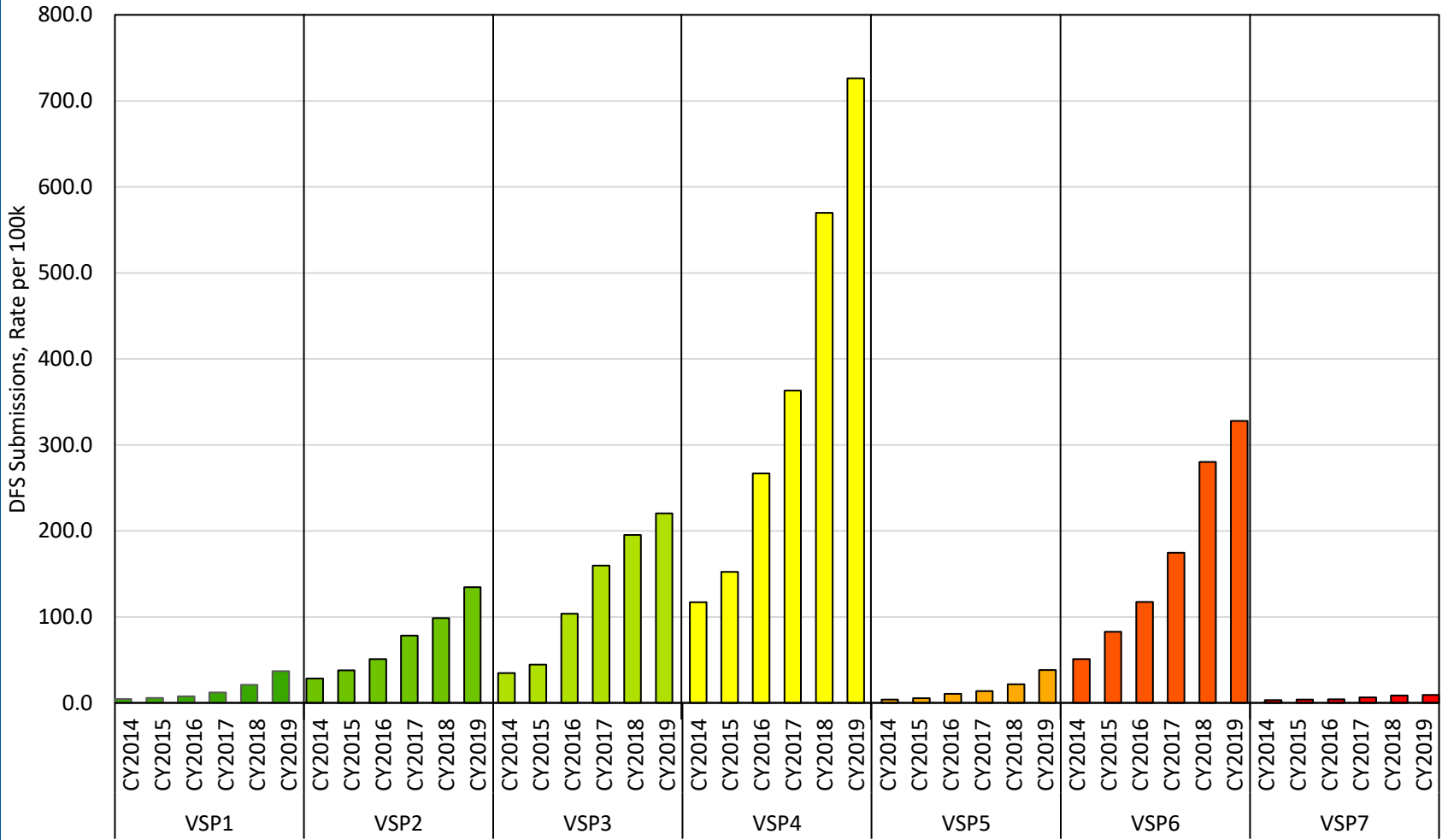
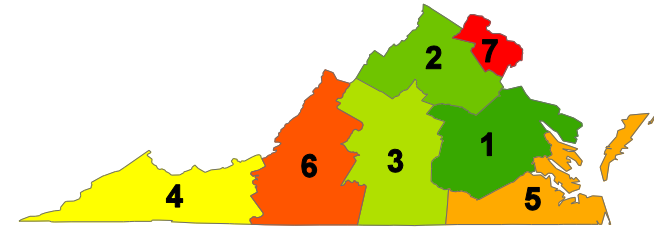
Methamphetamine Submissions

Cases submitted to DFS, calendar years 2001-2019



Regional Methamphetamine DFS Submissions

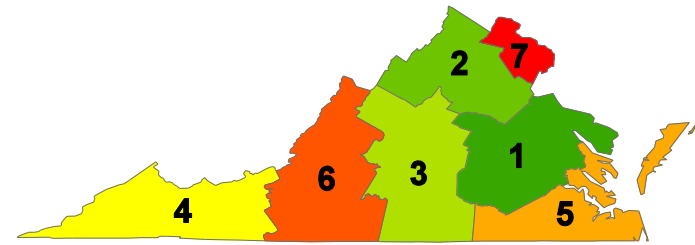
Rate Per 100,000 Population, CY2014-2019



VSP Division, by Calendar Year

Methamphetamine Summary

Statewide and by VSP Division

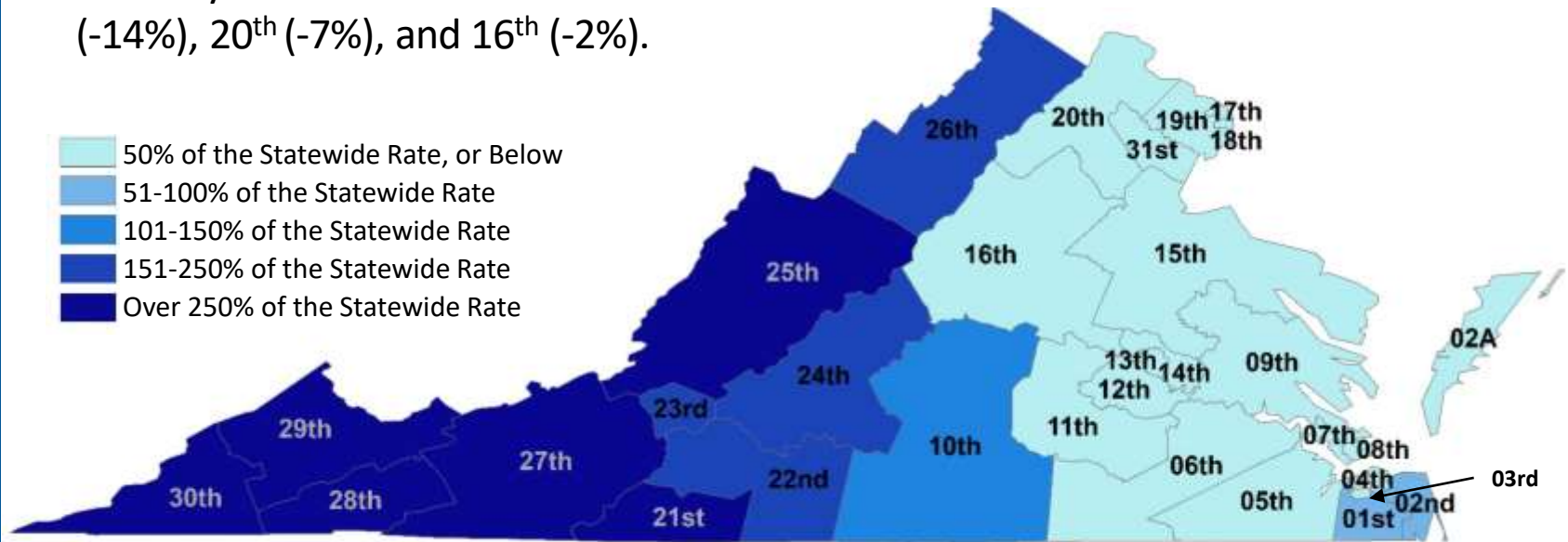


- Number of methamphetamine case submissions
 - Statewide, methamphetamine cases submitted to DFS increased 27% between 2018 and 2019.
 - Between 2012 and 2019, methamphetamine submissions increased 854% statewide.
 - VSP Divisions 4 and 6 submitted the majority of the statewide total number of methamphetamine cases in 2019 (32%, and 26% respectively).
 - Relatively few cases were submitted by Divisions 7, 1, and 5 in 2019 (3%, 5%, and 7%, respectively).
- Rate of submissions, per 100,000 population
 - In 2018, the rate of methamphetamine cases submitted from Division 4 was over twice the rate from Division 6, which had the second highest rate.
 - No Division saw a drop in the rate of submissions in 2019.

Methamphetamine Data by Court District

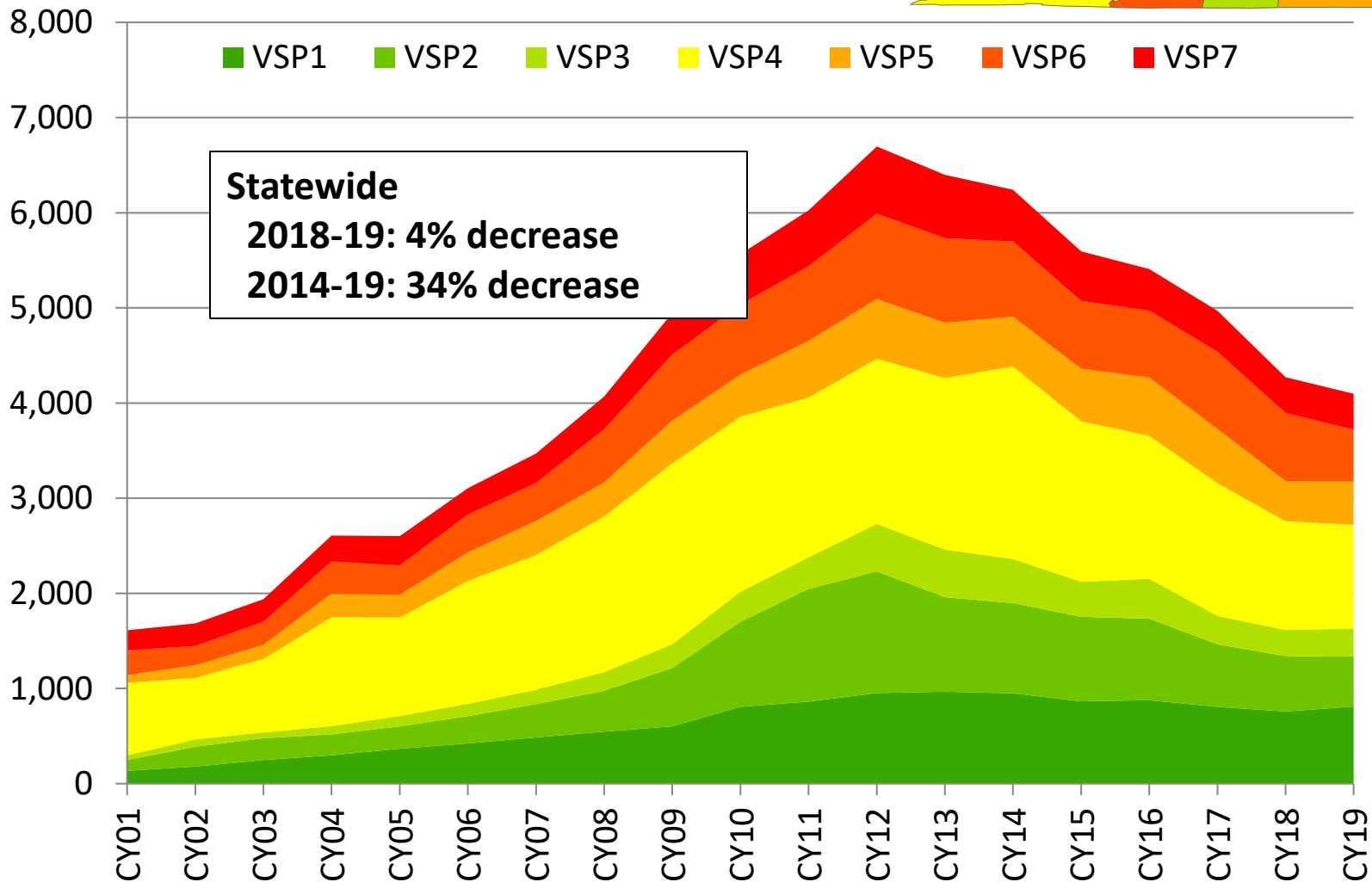
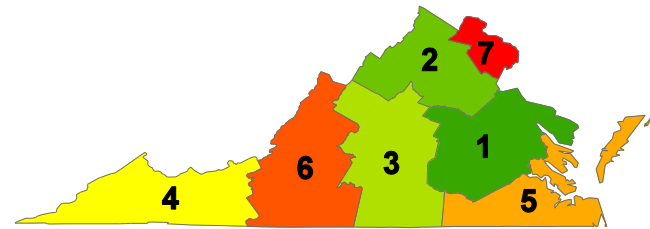
Rate of submissions per 100,000 population, CY2019

- Statewide, the rate of methamphetamine submissions to DFS in 2019 was 114.6 per 100,000 population, up 27% from 2018.
- The Court Districts with the highest rate of methamphetamine submissions in 2019 were the 30th (up 26% from 2018), 28th (up 4%), and 29th (up 53%).
- The Court Districts with the largest increases between 2018 and 2019 were the 9th (348%), 2A (150%), and the 6th (150%).
- The only Court Districts with decreases between 2018 and 2019 were the 21st (-14%), 20th (-7%), and 16th (-2%).



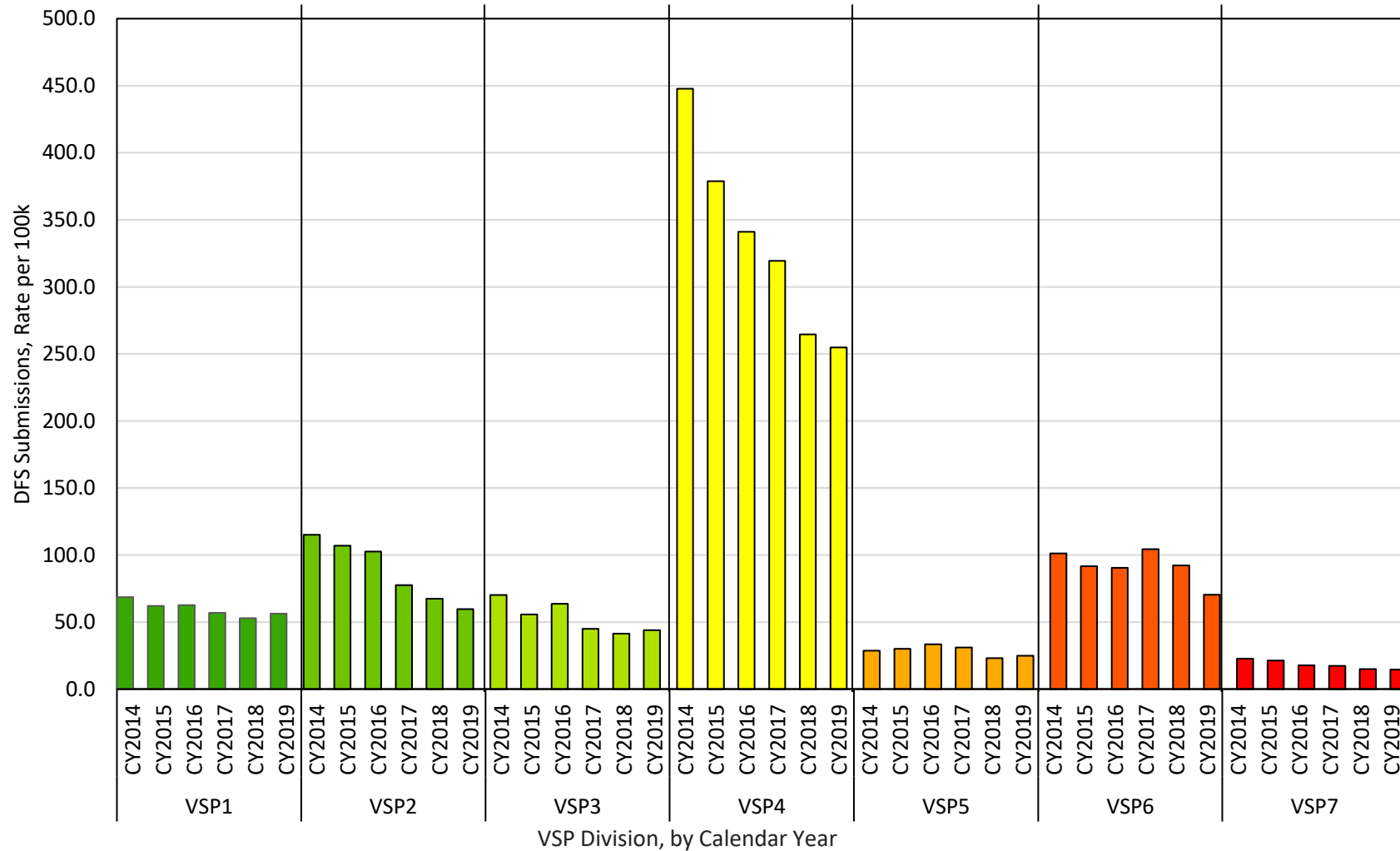
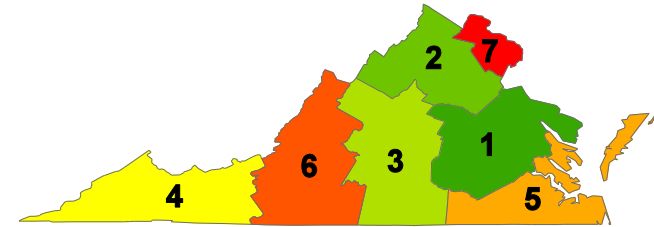
Prescription Opioid Submissions

Cases submitted to DFS, calendar years 2001-2019



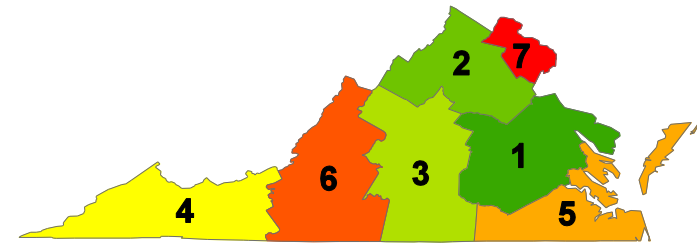
Regional Prescription Opioid DFS Submissions

Rate Per 100,000 Population, CY2014-2019



Prescription Opioid Summary

Statewide and by VSP Division

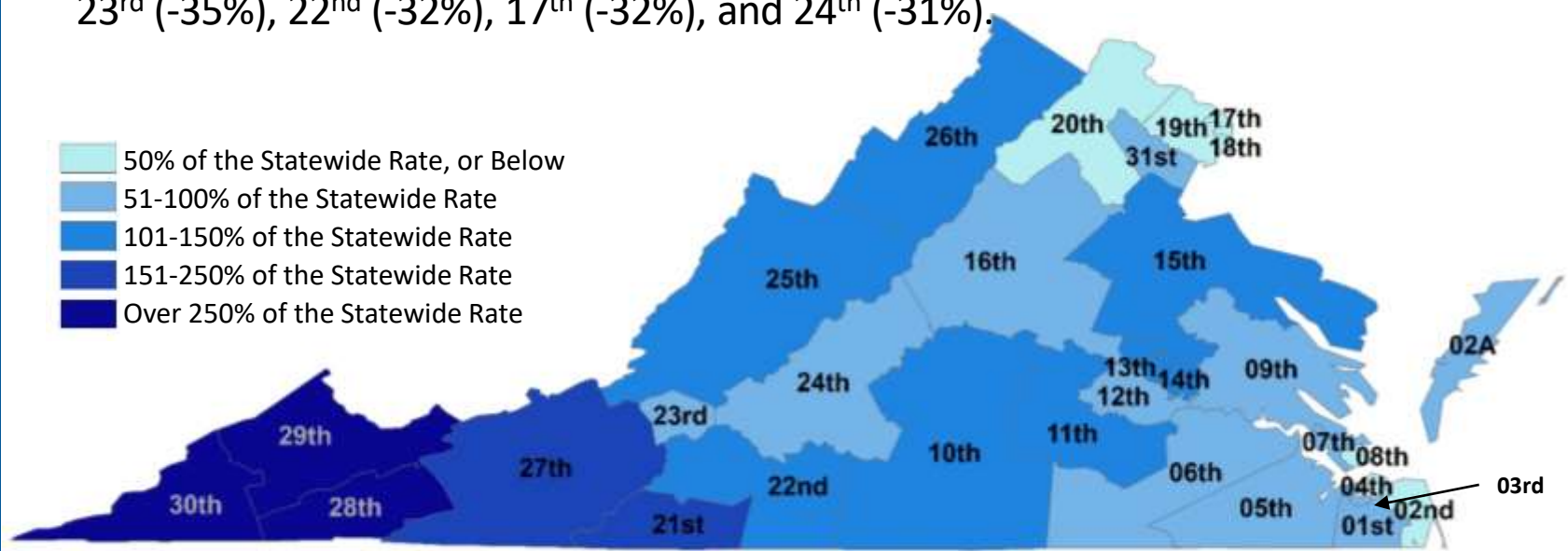


- Number of prescription opioid case submissions
 - Statewide, the number of prescription opioid cases submitted to DFS decreased 4% between 2018 and 2019.
 - After peaking in 2012, the number of prescription opioid submissions dropped each year. Between 2012 and 2019, submissions dropped 39% statewide.
 - VSP Division 4 has consistently submitted the most prescription opioid cases. In 2019, 27% of the statewide prescription opioid cases were from Division 4.
- Rate of submissions, per 100,000 population
 - In 2019, the rate of prescription opioid submissions from Division 4 was almost four times higher than the rate for Division 6, the next highest, and more than 17 times higher than the rate for Division 7.

Prescription Opioid Data by Court District

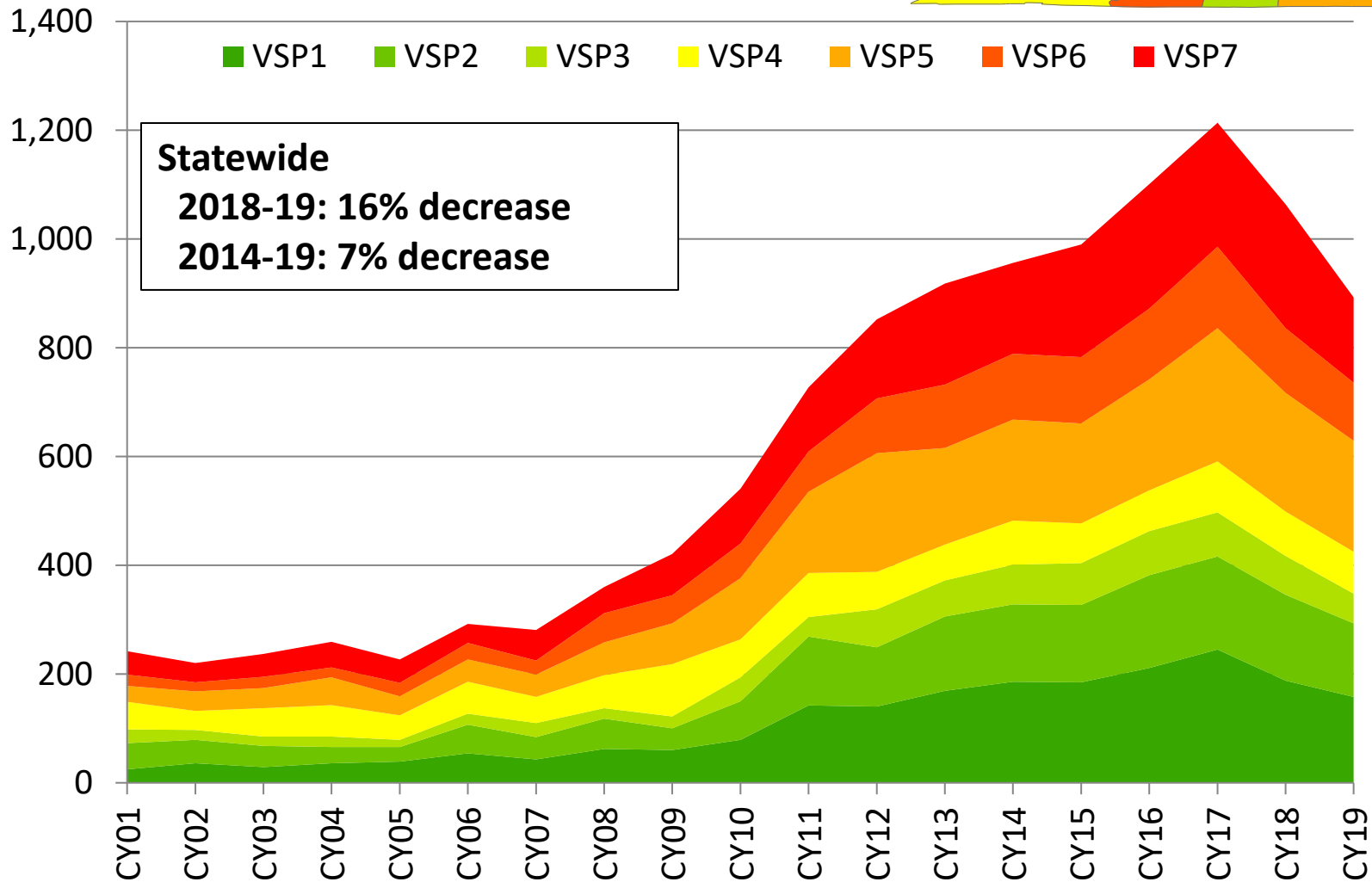
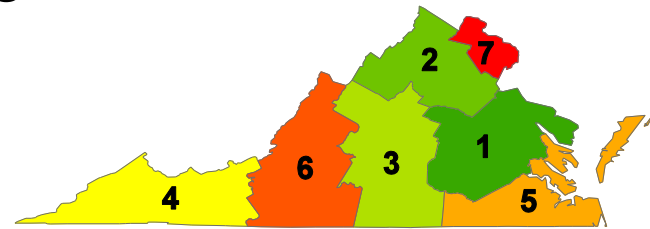
Rate of submissions per 100,000 population, CY2019

- Statewide, the rate of prescription opioid submissions to DFS in 2019 was 48.0 per 100,000 population, down 4% from 2018.
- The Court Districts with the highest rate of prescription opioid submissions in 2019 were the 29th (down 22% from 2018), 30th (up 10%), and 28th (up 1%).
- The Court Districts with the largest increases between 2018 and 2019 were the 18th (113%) and the 5th (63%).
- The Court Districts with the largest decreases between 2018 and 2019 were the 23rd (-35%), 22nd (-32%), 17th (-32%), and 24th (-31%).



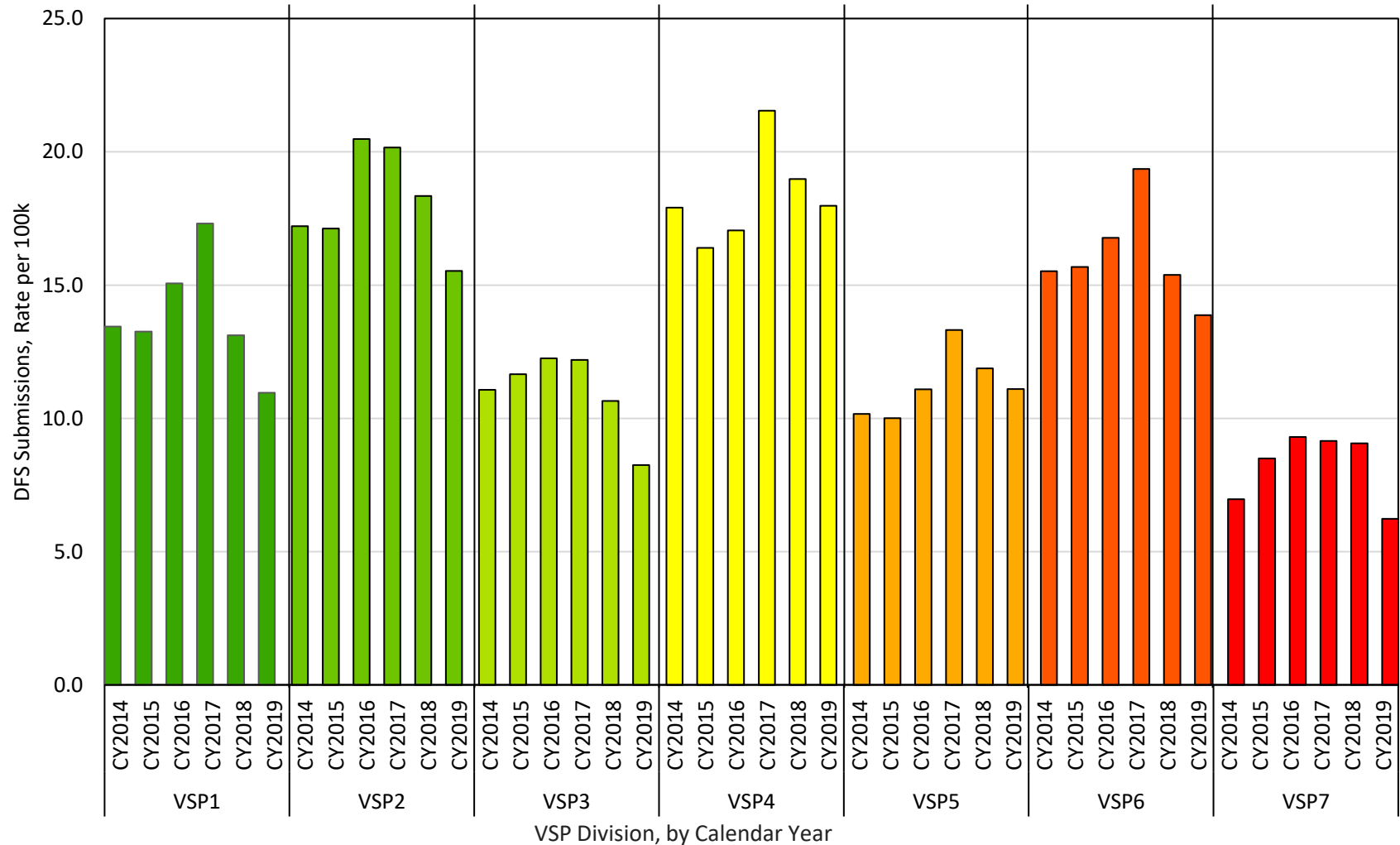
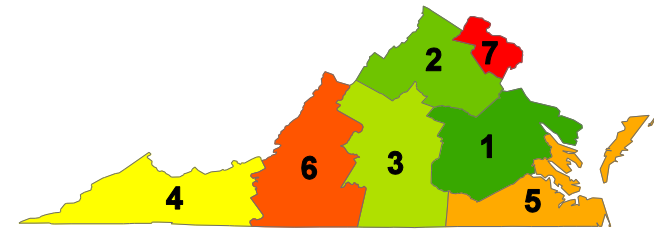
Prescription Stimulant Submissions

Cases submitted to DFS, calendar years 2001-2019



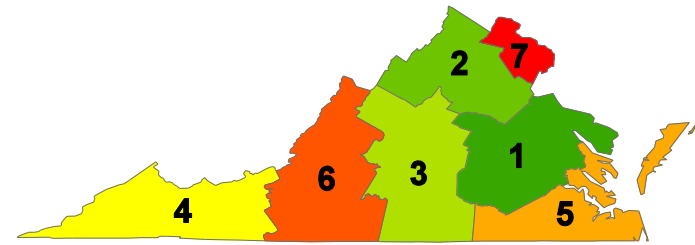
Regional Prescription Stimulant DFS Submissions

Rate Per 100,000 Population, CY2014-2019



Prescription Stimulant Summary

Statewide and by VSP Division

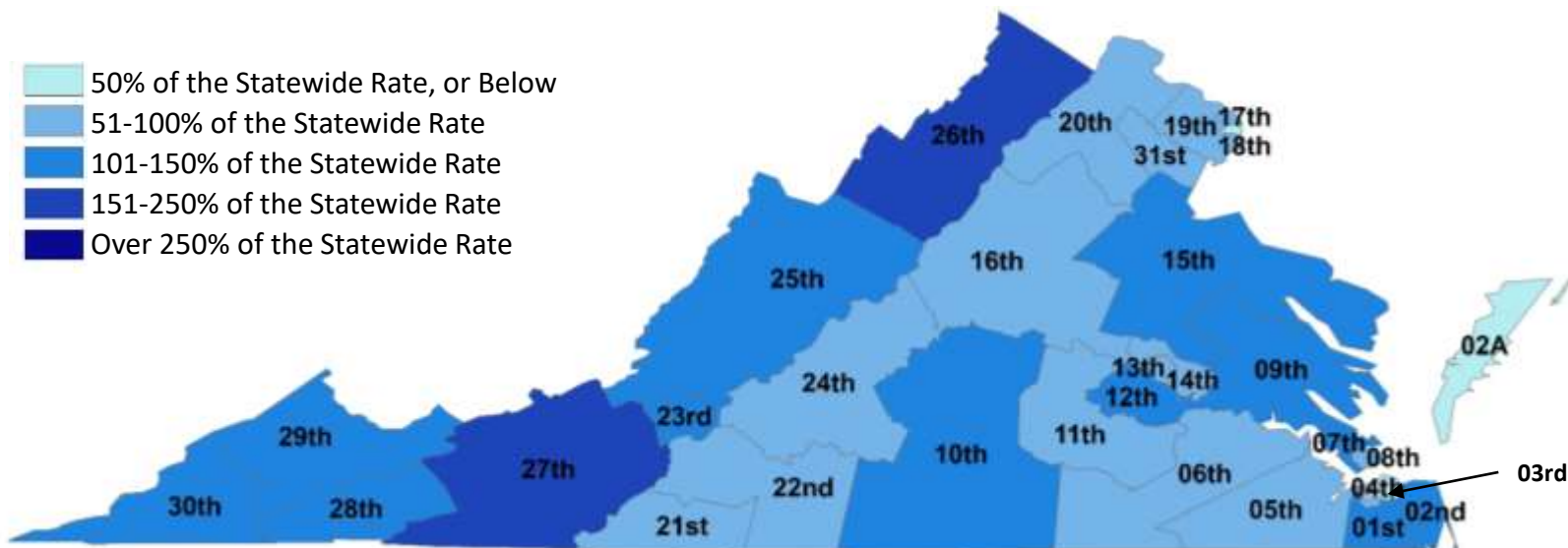


- Number of prescription stimulant case submissions
 - Statewide, the number of prescription stimulant cases submitted to DFS decreased 16% between 2018 and 2019.
 - Between 2007 and 2017, statewide submissions increased 332%. Between 2017 and 2019 submissions dropped 26%.
- Rate of submissions, per 100,000 population
 - The rate of prescription stimulant cases submitted to DFS in 2019 was highest in VSP Divisions 4 (down 5% from 2018), 2 (down 15%), and 6 (down 10%).
 - Between 2018 and 2019, the rate of prescription stimulant case submissions dropped in each VSP Division, with the largest drops in Divisions 7 and 3 (31% and 23%, respectively).

Prescription Stimulant Data by Court District

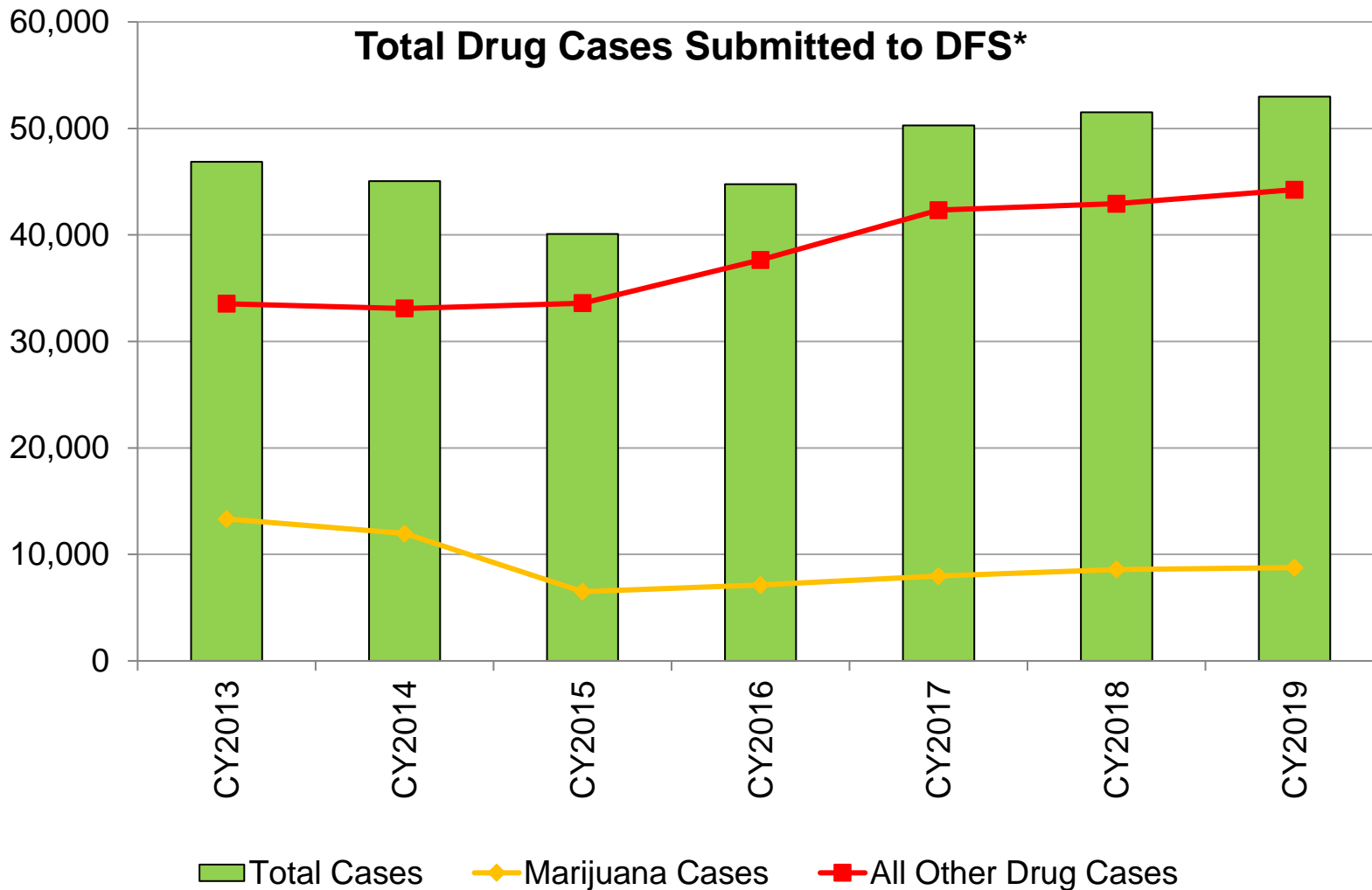
Rate of submissions per 100,000 population, CY2019

- Statewide, the rate of prescription stimulant submissions to DFS in 2019 was 10.5 per 100,000 population, down 16% from 2018.
- The Court Districts with the highest rates of prescription stimulant submissions in 2019 were the 27th (up 27% from 2018), and 26th (down 3%).
- The Court Districts with the largest increases between 2018 and 2019 were the 18th (100%), 3rd (100%), and the 9th (76%).
- The Court Districts with the largest decreases between 2018 and 2019 were 2A (-75%), 22nd (-69%), 29th (-47%), and 19th (-46%).



Combined Drug Cases*

CY2013-2018



*Includes all substances, including those not presented in this report. Note that if a single submission by a law enforcement agency includes multiple substances, it will be counted as multiple submissions (cases) for purposes of this report.

Data Source: DFS monthly submission to NFLIS



Combined Drug Cases*

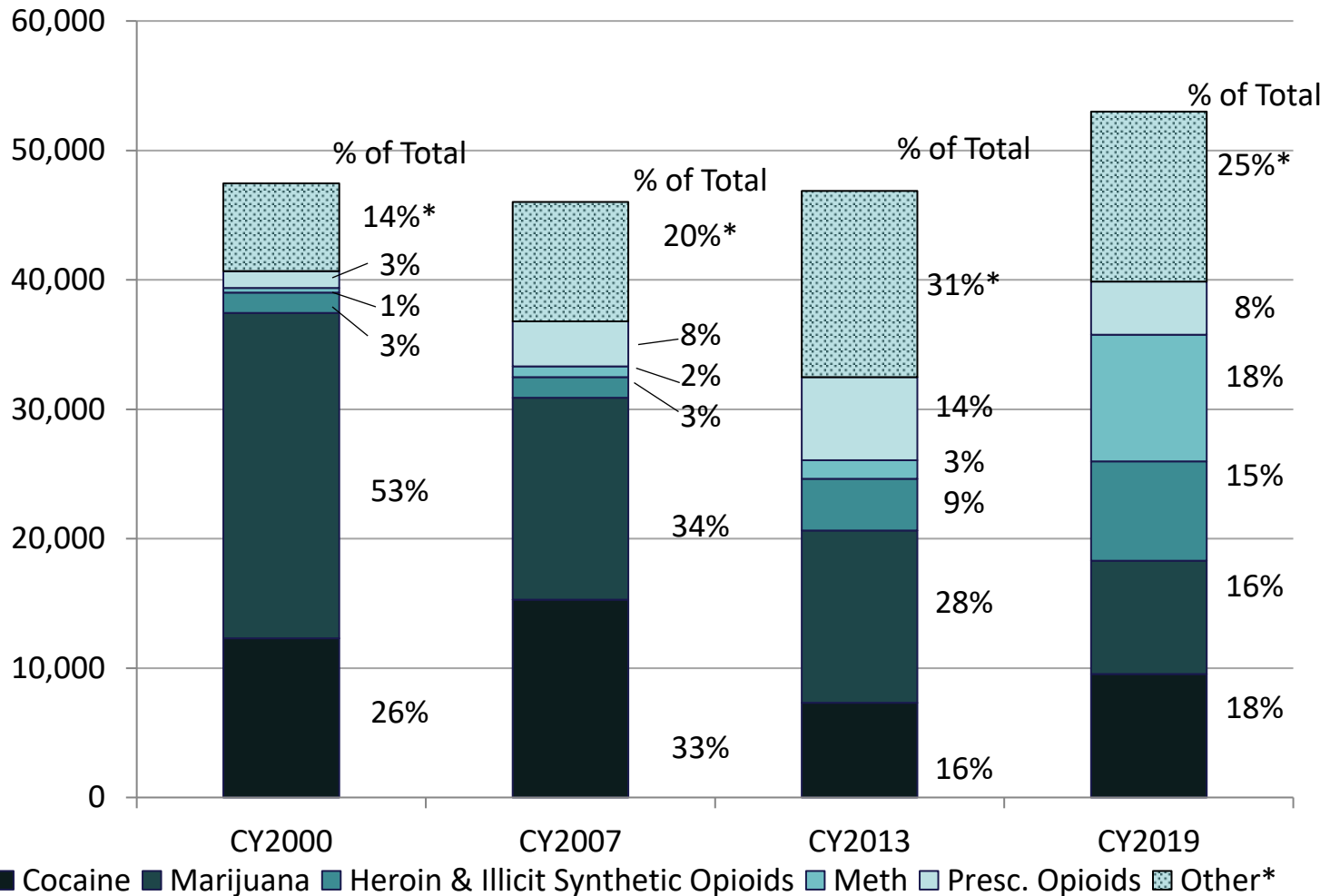
CY2013-2019

- Beginning January 2015, DFS stopped accepting plant material for testing in simple possession of marijuana cases without a court order. In simple possession of marijuana cases, law enforcement officers can provide testimony at trial as to the results of field tests. This appears to have resulted in a substantial decrease in marijuana cases submitted to DFS since 2014.
- In 2013, marijuana cases represented the largest percentage (28%) of cases submitted to DFS, when compared with other drug types. In 2019, marijuana cases made up only 16% of the cases. This substantial drop in marijuana cases should have had a noticeable impact on the overall number of drug cases.
- However, a recent increase in submissions of other, more complicated, substances has more than offset the reduction in marijuana cases.
- Between 2014 and 2019, the total number of drug cases submitted to DFS increased 18%.



Combined Drug Cases

Selected Drug Types



In CY2000, cocaine and marijuana made up 79% of DFS cases. In 2019, they were only 34% of the total. Between 2000 and 2019, heroin, prescription opioids, and illicit synthetic opioids grew from 6% to 23% of the total, and methamphetamine grew from 1% to 18%.

*Includes all substances other than those listed, including those not presented in this report. Note that if a single submission by a law enforcement agency includes multiple substances, it will be counted as multiple submissions (cases) for purposes of this report. Totals may not add to 100%, due to rounding.

Data Source: DFS monthly submission to NFLIS

Synthetic Drugs Identified in Cases Submitted in 2019

■ Synthetic Opioids

- 2-fluorofentanyl
- 3-fluorofentanyl
- 3-methylfentanyl
- acetyl-alpha-methylfentanyl
- acryl fentanyl
- benzyl fentanyl
- butyryl fentanyl
- carfentanil
- cyclopropyl fentanyl
- desmethyl fentanyl
- desmethylprodine
- furanyl fentanyl
- furanyl UF-17
- methoxyacetyl fentanyl
- N-methyl norfentanyl
- para-fluorobutyrylfentanyl
- para-fluorofentanyl
- para-fluoroisobutyryl fentanyl
- pentanoyl fentanyl
- U-47700
- U-48800

■ Benzodiazepines

- Adinazolam
- Clonazolam
- Deschloroetizolam
- Etizolam
- Flualprazolam
- Flubromazolam
- Phenazepam

Data Sources

Drug submission data for this report were provided by DFS, using information collected for the National Forensic Laboratory Information System. This report defines “cases” differently from how DFS uses the term internally. For purposes of this report, if multiple drugs are identified in a single submission, each drug is counted separately as one “case.” For example, a submission that includes both heroin and cocaine will be counted once as a heroin case and once as a cocaine case.

Arrest data were taken from the annual *Crime in Virginia* reports prepared by the Virginia State Police (VSP), http://www.vsp.state.va.us/Crime_in_Virginia.shtm.

Population data used to calculate rates were provided by the Weldon Cooper Center for Public Service, <http://www.coopercenter.org/demographics>.

Data analysis was provided by the DCJS Criminal Justice Research Center.